

Late Handouts Distributed

12-14-21

(Date)



CITY OF IOWA CITY

410 East Washington Street
Iowa City, Iowa 52240-1826
(319) 356-5000
(319) 356-5009 FAX
www.icgov.org

City Council Agenda – December 14, 2021 – Special Formal Meeting

Information submitted between distribution of late handouts on Monday and 4:00pm on Tuesday.

Late Handouts(s):

Regular Formal Agenda

10. Reprecincting - See the following:

- a. 12/14/21 - Map A Legal description
- b. 12/14/21 - Map C Legal Description
- c. 12/14/21 – Map A with Precincts and Council Dist inset
- d. 12/14/21 – Map C with Precincts and Council Dist inset

Plan A Legal Descriptions

Late Handouts Distributed

City Council District Descriptions:

Council District A: Voting Precincts: 2, 7, 8, 9, 10, 12, 13, 26, 27

Council District B: Voting Precincts: 1, 6, 14, 15, 16, 17, 18, 23, 24

Council District C: Voting Precincts: 3, 4, 5, 11, 19, 20, 21, 22, 25

12-14-21

(Date)

Precinct Legal Descriptions:

Precinct 1: Beginning at the intersection of S Scott Boulevard and E Court Street, proceeding north along the centerline of Scott Boulevard to Rochester Avenue; west on Rochester Avenue to the intersection at N 1st Avenue; south on N 1st Avenue to E Washington Street; east along E Washington Street to S Westminster Street; south along S Westminster Street to E Court Street; then east along E Court Street to the point of beginning.

Precinct 2: Beginning at the intersection of Emerald Street and Melrose Avenue, proceeding west along Melrose Avenue to its intersection with Westgate Street; following Westgate Avenue south to the Keswick Drive; west along Keswick Drive, curving south, to the intersection of Keswick Drive and W Benton Street; east on W Benton Street to Teg Drive, thence south on Teg Drive and east along Aber Avenue to the intersection of Aber Avenue and Sunset Street; southeast along Sunset Street to the intersection at Highway 1 W; northeast along the centerline of the southwest-bound lanes on Highway 1 W to a point at the apparent intersection of the centerline of Weeber Street extended and Highway 1 W; northwest to the centerline at the easterly termination of Edingale Drive pavement, then southwest along Edingale Drive to its intersection with Weeber Street; north on Weeber Street to W Benton Street; east on W Benton Street to Oaknoll Drive; north along Oaknoll Drive to Oakcrest Street; west on Oakcrest Street to George Street; north along George Street to the point of apparent intersection with the City of Iowa City Corporate Limits; generally west along said Corporate Limits to their intersection with Sunset Street; south along Sunset Street to W Benton Street; west on W Benton Street to Emerald Street; north along Emerald Street to the point of beginning.

Precinct 3: Beginning at the intersection of US Highway 6 W and 1st Avenue, following 1st Avenue southwest towards the Iowa Interstate Railroad Bridge, then tracing the path of the Iowa Interstate Railroad generally southeast to its apparent intersection with the western bank of the Iowa River; north along the western bank of the Iowa River to the apparent intersection with W Iowa Avenue; west along W Iowa Avenue to S Riverside Drive/US Highway 6; thence generally northwest along S Riverside Drive/US Highway 6 to the point of beginning.

Precinct 4: From the point of beginning at the intersection N Dubuque Street and Foster Road, west along Foster Road to its terminus at Walker Circle; northeast following the northwest parcel line of lot 110 of the Peninsula Neighborhood Phase 2A subdivision; northwest following the southwest parcel line of Outlot "A" of Oakmont Estates subdivision to the southern bank of the Iowa River, and continuing to the apparent intersection of said parcel line extended with the City of Iowa City Corporate Limits; generally south following the Corporate Limits to the point at which they intersect with Riverside Drive/US Highway 6 W; generally southeast along Riverside Drive/US Highway 6 W to W Iowa Avenue, then east along W Iowa Avenue to the apparent intersection with the centerline of the Iowa River; north following the centerline of the Iowa River to its apparent intersection with E Park Road; east on E Park Road to N Dubuque Street; generally north following the centerline of N Dubuque Street to a point approximately adjacent to the property 1032 N Dubuque Street, then generally north following the centerline of the southbound lanes of N Dubuque Street to the point of beginning.

Precinct 5: Beginning at the intersection of N Dubuque Street and E Park Road, west on E Park road to the apparent intersection with the centerline of the Iowa River, thence southwest following the centerline of the Iowa River to its apparent intersection with W Iowa Avenue; west along W Iowa Avenue to its apparent intersection with the western bank of the Iowa River; south along the western bank of the Iowa River to the apparent intersection with the centerline

of the eastbound lanes of W Burlington Street/Highway 1; east along the centerline of the eastbound lanes of W Burlington Street/Highway 1 to the CRANDIC Railroad; then east along the centerline of W Burlington Street/Highway 1 to the intersection with S Clinton Street; north along Clinton Street to Church Street, then continuing east on Church Street to its intersection with N Dubuque Street; then north on N Dubuque Street to the point of beginning.

Precinct 6: Beginning at the intersection of Muscatine Avenue and 4th Avenue, south along 4th Avenue to F Street; west along F Street to its intersection with 5th Avenue, then following 5th Avenue south to I Street; east along I Street to 3rd Avenue; south on 3rd Avenue to J Street; east on J Street to 2nd Avenue; south along 2nd Avenue to the extended centerline's apparent intersection with the Iowa Interstate Railroad; following the Iowa Interstate Railroad southeast to the point at which it crosses the City of Iowa City Corporate Limits; north following the Corporate Limits to the point at which it intersects American Legion Road, east of the Silvercrest Way and American Legion Road intersection; then west along American Legion Road, continuing on Muscatine Avenue, to the point of beginning.

Precinct 7: Beginning at the intersection of Melrose Avenue and Hawkeye Park Road, following Hawkeye Park Road to the north and east to its terminus at the intersection with N Mormon Trek Boulevard; northeast along N Mormon Trek Boulevard to its apparent intersection with the Iowa Interstate Railroad at City of Iowa City Corporate Limits; tracing the Corporate Limits generally west-northwest to a point on Deer Creek Road SE, then continuing to follow the Corporate Limit boundary south, to its intersection with Melrose Avenue west of Slothower Road; then east on Melrose Avenue to the point of beginning.

Precinct 8: Beginning at the intersection of Rohret Road and Mormon Trek Boulevard, following Rohret Road west to its apparent intersection with US Highway 218; northwest on US Highway 218 to its apparent intersection with Melrose Avenue; west along Melrose Avenue to the City of Iowa City Corporate Limits; then tracing the Corporate Limits south, then generally east, to the apparent intersection of the centerline of Kitty Lee Road extended, southwest of Mormon Trek Boulevard; then proceeding north, continuing on Mormon Trek Boulevard, to the point of beginning.

Precinct 9: Beginning at the intersection of N Mormon Trek Boulevard and Hawkeye Park Road, following Hawkeye Park Road generally west and south to its terminus at Melrose Ave; east along Melrose Avenue to Westwinds Drive; south on Westwinds Drive to Roberts Road; east along Roberts Road to Bartelt Road; generally north along Bartelt Road following the curve to Mormon Trek Boulevard; south along Mormon Trek Boulevard to a point that is approximately adjacent to the intersection of Mormon Trek Boulevard and Plaen View Drive, then continuing south along the centerline of Kitty Lee Road extended, and eventually tracing the City of Iowa City Corporate Limits generally south then east then north to the point at which the Corporate Limit boundary intersects Grace Drive; northwest following the western boundary of the Iowa City Municipal Airport parcel to its apparent intersection with the centerline of the southbound lanes of Highway 1 W; northeast following said centerline to Sunset Street; northwest along Sunset Street to Aber Avenue; west on Aber Avenue, then generally north on Teg Drive to W Benton Street; west along W Benton Street to Keswick Drive; north on Keswick Drive, following the curve, to Westgate Street; north on Westgate Street to Melrose Avenue; east on Melrose Avenue to its apparent intersection with the Corporate Limits; following the Corporate Limits generally northeast to the apparent intersection with the Iowa Interstate Railroad; northwest following the Iowa Interstate Railroad to its apparent intersection with Mormon Trek Boulevard; then south along Mormon Trek Boulevard to the point of beginning.

Precinct 10: Beginning at the intersection of Sycamore Street and Wetherby Drive, heading west along Wetherby Drive to Russell Drive; north on Russell Drive to Burns Avenue; west on Burns Avenue to Taylor Drive; north on Taylor Drive to Sandusky Drive; generally west on Sandusky Drive to Pepper Drive; following Pepper Drive south then generally west along its curve to the intersection with Sandusky Drive; northeast on Sandusky Drive to Keokuk Street; north on Keokuk Street to Southgate Avenue; west on Southgate Avenue to its apparent intersection with the CRANDIC Railroad; following the CRANDIC Railroad southwest to its apparent intersection with the City of Iowa City Corporate Limits and then continuing along said limits generally south, then north, then east, to the point of apparent intersection of said limits with the centerline of the Iowa River; continuing south along the centerline of the Iowa River to its apparent intersection with the East Lucas Township boundary line; then continuing east along said boundary line to the apparent

intersection with City of Iowa City Corporate Limits west of Soccer Park Road and then continuing along said limits generally north, then west to the point of apparent intersection of said limits and Sycamore Street, south of the intersection of Sycamore St and Langenberg Avenue; then north along Sycamore Street to the point of beginning.

Precinct 11: Beginning at the intersection of E Burlington Street and S Linn Street, following E Burlington Street/Highway 1 west to its apparent intersection with the western bank of the Iowa River, continuing south along the western bank of the Iowa River to its apparent intersection with the Iowa Interstate Railroad; west along the Iowa Interstate Railroad to its apparent intersection with Greenwood Drive; southwest along Greenwood Drive to W Benton Street; east along W Benton Street to its apparent intersection with the centerline of the Iowa River; south along the centerline of the Iowa River to its apparent intersection with US Highway 6 E; following US Highway 6 E east to the intersection with S Gilbert Street; north along S Gilbert Street to its apparent intersection with Iowa Interstate Railroad; west, following the path of the Iowa Interstate Railroad, to its apparent intersection with the centerline of Ralston Creek; north along the centerline of Ralston Creek to its apparent intersection with E Prentiss Street; north from the center of the intersection of E Prentiss Street and S Linn Street to the point of beginning.

Precinct 12: Beginning at the intersection of US Highway 6 E and Sycamore Street, south along Sycamore Street to the apparent intersection with City of Iowa City's Corporate Limits, then east to its intersection with the Sycamore Greenway Trail; following the Sycamore Greenway Trail north to its apparent intersection with the centerline of Whispering Meadow Drive extended; east along Whispering Meadow Drive to Whispering Prairie Avenue; north along Whispering Prairie Avenue to Lakeside Drive; northeast along Lakeside Drive to the centerline of the northwest bound travel lanes of US Highway 6 E; northwest following said centerline of US Highway 6 E to the point of beginning.

Precinct 13: Beginning at the intersection of W Benton Street and Weeber Street, south on Weeber Street to Edingale Drive; east along Edingale Drive to its terminus, then in a southeast trajectory to a point of intersection with the centerline of the southbound travel lanes of Highway 1 W; southwest along the centerline of the southbound travel lanes of Highway 1 W to Mormon Trek Boulevard; southeast along Mormon Trek Boulevard to the point of apparent intersection with the northern boundary of JJR Davis Fourth Addition, along the property line of the Iowa City Municipal Airport; east following the aforementioned property line to its apparent intersection with the City of Iowa City Corporate Limits near Grace Drive; tracing the Corporate Limits, generally southeastern, to the apparent intersection with the CRANDIC Railroad southwest of the intersection of Old Highway 218 and Mormon Trek Boulevard/McCollister Boulevard; northeast following the CRANDIC Railroad to its apparent intersection with the centerline of the Iowa River; generally north following the centerline of the Iowa River to its apparent intersection with W Benton Street; west along W Benton Street to Greenwood Drive; northeast along Greenwood Drive to the apparent intersection with the Iowa Interstate Railroad; northwest along the Iowa Interstate Railroad to the point of apparent intersection with the Corporate Limits; tracing the Corporate Limits generally southwest to the apparent intersection with George Street; south along George Street to Oakcrest Street; east along Oakcrest Street to Oaknoll Drive; south along Oaknoll Drive to W Benton Street; then west on W Benton Street to the point of beginning.

Precinct 14: Beginning at the intersection of US Highway 6 E and S Gilbert Street, following the centerline of the northeast bound travel lanes of US Highway 6 E southwest to Plum Street, then following the centerline of the southeast bound travel lanes of US Highway 6 E southwest, to Sycamore Street; then following the centerline of the southeast bound travel lanes of US Highway 6 E southwest to the intersection with Fairmeadows Boulevard; following Fairmeadows Boulevard to the northeast to Lower Muscatine Road; northwest along Lower Muscatine Road to S 1st Avenue; northeast along S 1st Avenue to the apparent intersection with the Iowa Interstate Railroad; following the Iowa Interstate Railroad generally northwest to its apparent intersection with S Gilbert Street; then south along S Gilbert Street to the point of beginning.

Precinct 15: Beginning at the intersection of 420th Street and US Highway 6 SE, following the City of Iowa City Corporate Limits east and continuing to trace the boundary until the apparent intersection of the Corporate Limits with the Iowa Interstate Railroad, north of the terminus of Compass Drive; northwest along the Iowa Interstate Railroad to its apparent intersection with S 1st Avenue; southwest along S 1st Avenue to Lower Muscatine Road; southeast along Lower

Muscatine Road to Fairmeadows Boulevard; southwest along Fairmeadows Boulevard to the centerline of the northeast bound travel lanes of US Highway 6 E; southeast following said centerline to Industrial Park Road; southwest along the centerline of Industrial Park Road and continuing along the centerline of Lakeside Drive to Whispering Prairie Avenue; south on Whispering Prairie Avenue to Whispering Meadow Drive; west on Whispering Meadow Drive to a point at the approximate apparent intersection of the centerline of Whispering Meadow Drive extended and the Sycamore Greenway Trail; south along the Sycamore Greenway Trail to the apparent intersection with the Corporate Limits; tracing the Corporate Limit boundary south to a point near Napoleon Street SE; continuing east along Napoleon Street SE to Sioux Avenue SE; north along Sioux Avenue SE until the apparent intersection with City of Iowa City Corporate Limits; then continuing to trace the Corporate Limit boundary east to the point of beginning.

Precinct 16: Beginning at the intersection of Taft Avenue SE and E Court Street, following E Court Street west to the intersection with Kenwood Drive; south on Kenwood Drive to Friendship Street; southwest on Friendship Street to Meadow Street; south on Meadow Street to Dover Street; south along Dover Street to its intersection with Muscatine Avenue; then east following Muscatine Avenue and continuing east on American Legion Road to the apparent intersection with the City of Iowa City Corporate Limits; then tracing the Corporate Limits back to the point of beginning.

Precinct 17: Beginning at the intersection of E Washington Street and S Westminster Street, west along E Washington Street to N 1st Avenue; north on N 1st Avenue to Rochester Avenue; west on Rochester Avenue to N 7th Avenue; south following N 7th Avenue to its intersection with Muscatine Avenue; southeast following Muscatine Avenue to Dover Street; north on Dover Street, and continuing north on Meadow Street to the intersection of Meadow Street and Friendship Street; northeast on Friendship Street to Kenwood Drive; north on Kenwood Drive to E Court Street; west on E Court Street to S Westminster Street; then north on Westminster Street to the point of beginning.

Precinct 18: Beginning at the intersection of Muscatine Avenue and E Burlington Street, west along E Burlington Street to S Governor Street; south on S Governor Street to Bowery Street; west on Bowery Street to S Dodge Street; south on Dodge Street to its apparent intersection with the Iowa Interstate Railroad; southeast along the Iowa Interstate Railroad to its apparent intersection with 2nd Avenue; north on 2nd Avenue to J Street; west on J Street to 3rd Avenue; north on 3rd Avenue to I Street; west on I Street to 5th Avenue; north on 5th Avenue to F Street; east on F Street and continuing onto 4th Avenue to the intersection with Muscatine Avenue; then northwest along Muscatine Avenue to the point of beginning.

Precinct 19: Beginning at the intersection of E Burlington Street/Highway 1 and S Van Buren Street, north on S Van Buren Street to E College Street; west on E College Street to S Linn Street; south on S Linn Street and continuing south along the centerline of Ralston Creek to its apparent intersection with the Iowa Interstate Railroad; generally east along the Iowa Interstate Railroad to its apparent intersection with S Dodge Street; north on S Dodge Street to E Burlington Street/Highway 1; then west on E Burlington Street/Highway 1 to the point of beginning.

Precinct 20: Beginning at the intersection of E Iowa Avenue and S Clinton Street, south on S Clinton Street to E Burlington Street/Highway 1; east on E Burlington Street/Highway 1 to S Linn Street; north on S Linn Street to E College Street; east on E College Street to S Van Buren Street; south on S Van Buren Street to E Burlington Street/Highway 1; east on E Burlington Street/Highway 1 to S Dodge Street/Highway 1; south along S Dodge Street to Bowery Street; east on Bowery Street to S Governor Street; north on S Governor Street to E Burlington Street/Highway 1; east on E Burlington Street to Muscatine Avenue; northwest on Muscatine Avenue to the centerline of the eastbound lane of E Iowa Avenue; then following the centerline of E Iowa Avenue to the point of beginning.

Precinct 21: Beginning at the intersection of Kimball Road and N Governor Street, generally southwest along Kimball Road to N Dubuque Street; south on N Dubuque Street to Church Street; west on Church Street and continuing south on N Clinton Street to the intersection with E Iowa Avenue; east on E Iowa Avenue to N Gilbert Street; north on N Gilbert Street to E Davenport Street; east on E Davenport Street to N Governor Street/Highway 1; north on N Governor Street/Highway 1 to the intersection with N Dodge Street/Highway 1; then north-northwest on N Governor Street to the point of beginning.

Precinct 22: Beginning at the intersection of N Governor Street and Kimball Road, south on N Governor Street to its intersection with N Dodge Street/Highway 1; northeast on N Dodge Street/Highway 1 to N Summit Street/Prairie Du Chien Road; north along Prairie Du Chien Road to its apparent intersection with the City of Iowa City Corporate Limits; then tracing the Corporate Limits east to the apparent intersection with the East Lucas Township boundary line; continuing along said boundary line north, then west to the apparent intersection with the centerline of the Iowa River; then continuing south along the centerline of the Iowa River to the apparent intersection with the southwest parcel line of Outlot "A" of Oakmont Estates subdivision; southeast along the aforementioned parcel line to the point of intersection with the parcel line of lot 110 of the Peninsula Neighborhood Phase 2A subdivision; then southwest following said parcel line to the terminus of Foster Road at Walker Circle; generally east following the curvature of Foster Road to N Dubuque Street; south along the centerline of the southbound lanes of N Dubuque Street a point approximately adjacent to 1032 N Dubuque Street, then following the centerline of the northbound lanes of N Dubuque Street to the intersection with Kimball Road; then generally northeast along Kimball Road to the point of beginning.

Precinct 23: Beginning at the intersection of N Governor Street/Highway 1 and E Bloomington Street, east on E Bloomington Street to Pleasant Street; south on Pleasant Street to Rochester Avenue; east on Rochester Avenue and continuing on to Herbert Hoover Highway to the apparent intersection with the Corporate Limits of Iowa City; following the Corporate Limits north and then west to the apparent intersection with Prairie Du Chien Road; south along Prairie Du Chien Road to N Dodge Street/Highway 1; southwest on N Dodge Street/Highway 1 to N Governor Street/Highway 1; then south on N Governor Street/Highway 1 to the point of beginning.

Precinct 24: Beginning at the intersection of Taft Avenue SE and E Court Street, following the City of Iowa City Corporate Limits north to the intersection of Taft Avenue SE and Lower West Branch Road; continuing to follow the Corporate limits west to a point adjacent to Broadmoor Lane, then continuing along the Corporate Limits north and encompassing the area containing the Churchill Meadows subdivisions, then continuing along the Corporate Limits south to Lower West Branch Road; then following the Corporate Limits west and north to the apparent intersection with Herbert Hoover Highway; southwest along Herbert Hoover Highway to N Scott Boulevard; south on N Scott Boulevard to E Court Street; then east on E Court Street to the point of beginning.

Precinct 25: Beginning at the intersection of N Governor Street/Highway 1 and E Davenport Street, west along E Davenport Street to N Gilbert Street; south on N Gilbert Street to E Iowa Avenue; east on E Iowa Avenue along the centerline of the eastbound lane to Muscatine Avenue; southeast on Muscatine Avenue to S 7th Avenue; north along S 7th Avenue to Rochester Avenue; west on Rochester Avenue to Pleasant Street; north on Pleasant Street to E Bloomington Street; then west on E Bloomington Street to N Governor Street/Highway 1; north on N Governor Street/Highway 1 to the point of beginning.

Precinct 26: Beginning at the intersection of Mormon Trek Boulevard and Bartelt Road, west along Bartelt Road to Roberts Road; west on Roberts Road to Westwinds Drive; north on Westwinds Drive to Melrose Avenue; west on Melrose Avenue to its apparent intersection with US Highway 218; southeast following US Highway 218 to its apparent intersection with Rohret Road; east along Rohret Road to Mormon Trek Boulevard; then north along Mormon Trek Boulevard to the point of beginning.

Precinct 27: Beginning at the intersection of US Highway 6 E and Sycamore Street, west along US Highway 6 E to its apparent intersection with the centerline of the Iowa River; south following the centerline of the Iowa River to the point of apparent intersection with the CRANDIC Railroad; northeast following the CRANDIC Railroad to its apparent intersection of Southgate Avenue; east along Southgate Avenue to Keokuk Street; south on Keokuk Street to Sandusky Drive; southwest following the curve of Sandusky Drive to Pepper Drive; following Pepper Drive, east and then north, to the intersection with Sandusky Drive; east on Sandusky Drive to Taylor Drive; south on Taylor Drive to Burns Avenue; east on Burns Avenue to Russell Drive; south on Russell Drive to Wetherby Drive; east on Wetherby Drive to Sycamore Street; then north on Sycamore Street to the point of beginning.

Plan C Legal Descriptions

Late Handouts Distributed

City Council District Descriptions:

12-14-21

(Date)

Council District A: Voting Precincts: 2, 7, 8, 9, 10, 12, 13, 26, 27

Council District B: Voting Precincts: 1, 6, 14, 15, 16, 17, 18, 23, 24

Council District C: Voting Precincts: 3, 4, 5, 11, 19, 20, 21, 22, 25

Precinct 1: Beginning at the intersection of N Scott Boulevard and Rochester Avenue, west along Rochester Avenue to the intersection with N 1st Avenue; south on N 1st Avenue to E Washington Street; east on E Washington Street to Potomac Drive; south and east following the curve of Potomac Drive to its intersection with Washington Park Road; south on Washington Park Road to E Court Street; east along E Court Street to Friendship Street; north on Friendship Street to E Washington Street; east on E Washington Street to N Scott Boulevard; then north on N Scott Boulevard to the point of beginning.

Precinct 2: Beginning at the intersection of W Benton Street and Wylde Green Road, west on W Benton Street to Sunset Street; south on Sunset Street to Derwen Drive; west on Derwen Drive to Penkridge Drive; south on Penkridge Drive to Denbigh Drive; west on Denbigh Drive, following the curve, to Hafor Drive; west on Hafor Drive to Teg Drive; north on Teg Drive to W Benton Street; west on W Benton Street to Mormon Trek Boulevard; south on Mormon Trek Boulevard to a point adjacent to the terminus of Plaen View Drive on the centerline of Mormon Trek Boulevard; south along the centerline of Kitty Lee Road extended to the apparent intersection with the City of Iowa City Corporate Limits, then south following the Corporate Limits to the centerline of the southwest bound travel lanes of Highway 1 SW; continuing northeast along the centerline of the southwest bound travel lanes of Highway 1 S/W to its intersection with Sunset Street; northwest along Sunset Street to Ashley Drive; northeast on Ashley Drive to Wylde Green Road; then generally north on Wylde Green Road to the point of beginning.

Precinct 3: Beginning at the intersection of US Highway 6 W and 1st Avenue, southwest along 1st Avenue to its apparent intersection with the Iowa Interstate Railroad; generally southeast following the Iowa Interstate Railroad to its apparent intersection with Melrose Avenue; east along Melrose Avenue and continuing on to Byington Road to the southern edge of Grand Avenue pavement; following the southern edge of Grand Avenue pavement east to the centerline of W Burlington Street/Highway 1 where it intersects US Highway 6/S Riverside Drive; then north on US Highway 6/Riverside Drive, following the curve, to the point of beginning.

Precinct 4: From the point of beginning at the intersection N Dubuque Street and Foster Road, west along the centerline of Foster Road to its terminus adjacent to Walker Circle; northeast following the northwest parcel line of lot 110 of the Peninsula Neighborhood Phase 2A subdivision; northwest following the southwest parcel line of Outlot "A" of Oakmont Estates subdivision to the southern bank of the Iowa River, and continuing to the apparent intersection of said parcel line with the City of Iowa City Corporate Limits; generally south following the Corporate Limits to the point at which US Highway 6 intersect; generally southeast along Riverside Drive/US Highway 6 to the intersection at W Iowa Avenue, then east on W Iowa Avenue to the apparent centerline of the Iowa River; north following the centerline of the Iowa River to its apparent intersection with E Park Road; east along E Park Road to N Dubuque Street; generally north following the centerline of N Dubuque Street to a point approximately adjacent to the property 1032 N Dubuque Street, then generally north following the centerline of the southbound lanes of N Dubuque Street to the point of beginning.

Precinct 5: Beginning at the intersection of N Dubuque Street and E Park Road, west along E Park Road to its apparent intersection with the centerline of the Iowa River; generally south following the centerline of the Iowa River to its apparent intersection with the centerline of W Iowa Avenue; west on W Iowa Avenue to US Highway 6/S Riverside Drive; south on US Highway 6/S Riverside Drive to the apparent intersection of the eastbound lanes of Highway 1/Burlington Street and US Highway 6/S Riverside Drive, then west following the southern edge of the Grand Avenue pavement to Byington Road; south following Byington Road, then continuing west along Melrose Avenue to its apparent intersection with the Iowa Interstate Railroad; generally southeast following the Iowa Interstate Railroad to the apparent

intersection with the centerline of the Iowa River; north following the centerline of the Iowa River to its apparent intersection with the centerline of the eastbound lanes of Highway 1/W Burlington Street; east along Highway 1/W Burlington Street to the intersection of Highway 1/E Burlington Street and S Linn Street; north on S Linn Street to E College Street; west on E College Street to the apparent intersection of E College Street and S Dubuque Street; north on S Dubuque Street to E Iowa Avenue; west along E Iowa Avenue to N Clinton Street; north on N Clinton Street to E Jefferson Street; west on E Jefferson Street to its apparent intersection with N Capitol Street; north along the apparent centerline of N Capitol Street to its intersection with E Davenport Street; east on E Davenport Street to N Clinton Street; north on N Clinton Street to Fairchild Street; east on Fairchild Street to N Dubuque Street; then north on N Dubuque Street to the point of beginning.

Precinct 6: Beginning at the intersection of Muscatine Avenue/American Legion Road and S Scott Boulevard, west along Muscatine Avenue to 4th Avenue; south on 4th Avenue and west on F Street to 5th Avenue; south on 5th Avenue to I Street; east on I Street to 3rd Avenue; south on 3rd Avenue to J Street; east on J Street to 2nd Avenue; south on 2nd Avenue to its apparent intersection with the Iowa Interstate Railroad; southeast following the Iowa Interstate Railroad to its apparent intersection with S Scott Boulevard; then north on S Scott Boulevard to the point of beginning.

Precinct 7: Beginning at the intersection of Mormon Trek Boulevard and Bartelt Road, west on Bartelt Road, following the curve, to Roberts Road; west on Roberts Road to Westwinds Drive; north on Westwinds Drive to its intersection with the centerline of the westbound travel lanes of Melrose Avenue; west along the centerline of the westbound travel lanes of Melrose Avenue to Galway Drive; south on Galway Drive to Killarney Road; southeast on Killarney Road to Donegal Court; south along Donegal Court following the curve to Tipperary Road; south on Tipperary Road to Shannon Drive; south on Shannon Drive to Rohret Road; east on Rohret Road to Mormon Trek Boulevard; then north on Mormon Trek Boulevard to the point of beginning.

Precinct 8: Beginning at the intersection of Rohret Road and Mormon Trek Boulevard, following the centerline of Rohret Road west to the apparent intersection with US Highway 218; northwest along US Highway 218 to the apparent intersection with Melrose Avenue; west along Melrose Avenue to the City of Iowa City Corporate Limits; then tracing the Corporate Limits south, then generally east, to the apparent intersection of the centerline of Kitty Lee Road extended, southwest of Mormon Trek Boulevard; then proceeding north, continuing on Mormon Trek Boulevard to the point of beginning.

Precinct 9: Beginning at the intersection of Mormon Trek Boulevard and Hawkeye Park Road, west and then south along Hawkeye Park Road to its intersection with the centerline of the westbound travel lanes of Melrose Avenue; east along the centerline of the westbound travel lanes of Melrose Avenue to Westwinds Drive; south along Westwinds Drive to Roberts Road; east on Roberts Road to Bartelt Road; north and east on Bartelt Road following the curve to Mormon Trek Boulevard; south on Mormon Trek Boulevard to W Benton Street; east on W Benton Street to Teg Drive; south following Teg Drive to Hafor Drive; east along Hafor Drive to Denbigh Drive; south on Denbigh Drive, following the curve, to Penkridge Drive; north on Penkridge Drive to Derwen Drive; generally east on Derwen Drive to Sunset Street; north on Sunset Street to W Benton Street; west on W Benton Street to Emerald Street; north on Emerald Street and continuing north following the City of Iowa City's Corporate Limits; continuing along the City of Iowa City's Corporate Limits to the point of apparent intersection with the Iowa Interstate Railroad; northwest along the Iowa Interstate Railroad to its apparent intersection with Mormon Trek Boulevard; southwest along Mormon Trek Boulevard to the point of beginning.

Precinct 10: Beginning at the intersection of E Benton Street and S Clinton Street, west along E Benton Street to Weeber Street; south on Weeber Street to Edingale Drive; southwest along Edingale Drive to Wylde Green Road; south on Wylde Green Road to Ashley Drive; southwest on Ashley Drive to Sunset Street; southeast on Sunset Street to the centerline of the southwest bound travel lanes of Highway 1 W; southwest along the southwest bound travel lanes of Highway 1 W to the apparent intersection with the City of Iowa City's Corporate Limits; tracing the Corporate Limits generally southeast to their apparent intersection with the centerline of the Iowa River; continuing south along the centerline of the Iowa River to its apparent intersection with the East Lucas Township boundary line; then continuing east along said boundary line to the apparent intersection with City of Iowa City Corporate Limits west of Soccer Park Road and then continuing

along said limits generally north, then west to the point of apparent intersection of said limits and Sand Road SE; north along Sand Road SE and continuing on S Gilbert Street to the apparent intersection with the CRANDIC Railroad; following the CRANDIC Railroad northeast to its apparent intersection with Southgate Avenue; east on Southgate Avenue to Keokuk Street; north on Keokuk Street to Plum Street; southeast on Plum Street to Marcy Street; north on Marcy Street to Highland Avenue; east on Highland Avenue to Marcy Street; north on Marcy Street to Florence Street; west on Florence Street to Keokuk Street; south on Keokuk Street to Keokuk Court; west on Keokuk Court to Diana Street; north on Diana Street to Kirkwood Avenue; west on Kirkwood Avenue to S Clinton Street; then north on S Clinton Street to the point of beginning.

Precinct 11: Beginning at the intersection of S Dubuque Street and E Burlington Street/Highway 1, west along E Burlington Street/Highway 1 to the apparent intersection of the centerline of the eastbound travel lane of W Burlington Street/Highway 1 and the center line of the Iowa River; south along the centerline of the Iowa River to its apparent intersection with W Benton Street; east along W Benton Street to S Clinton Street; south on S Clinton Street to Kirkwood Avenue; east on Kirkwood Avenue to Diana Street; south on Diana Street to Keokuk Court; east on Keokuk Court to Keokuk Street; north on Keokuk Street to Florence Street; east on Florence Street to Marcy Street; north on Marcy Street to Kirkwood Avenue; west on Kirkwood Avenue to S Lucas Street; north on S Lucas Street to Page Street; west on Page Street to S Dodge Street; north on S Dodge Street to the apparent intersection with the Iowa Interstate Railroad; west along the Iowa Interstate Railroad to its apparent intersection with S Gilbert Street; north on S Gilbert Street to E Court Street; west on E Court Street to Maiden Lane; south and then west on Maiden Lane to S Linn Street; north on S Linn Street to E Court Street; west on E Court Street to S Dubuque Street; then north on S Dubuque Street to the point of beginning.

Precinct 12: Beginning at the intersection of US Highway 6 SE and 420th Street SE, east along 420th Street to its apparent intersection with the City of Iowa City's Corporate Limits; tracing the Corporate limits generally east to Taft Avenue SE then along Taft Avenue SE to the north then west to the point of apparent intersection of the Corporate Limits with S Scott Boulevard; west following the Iowa Interstate Railroad from its apparent intersection with S Scott Boulevard to its apparent intersection with the centerline of Industrial Park Road extended; southwest along Industrial Park Road and continuing southwest along Lakeside Drive to its intersection with Nevada Ave; north on Nevada Avenue to Miami Drive; southwest on Miami Drive to Lakeside Drive; west on Lakeside Drive to the apparent intersection with the Sycamore Greenway Trail; south along the Sycamore Greenway Trail to the apparent intersection with the centerline of Whispering Meadow Drive extended; east then south following Whispering Meadow Drive to its apparent intersection with the northern boundary of the Saddlebrook Meadows Part 1 subdivision; west along said boundary to the point of apparent intersection with the Corporate Limits; tracing the Corporate Limits generally south to Napoleon Street SE; continuing east along Napoleon Street SE to Sioux Avenue SE; north along Sioux Avenue SE until the apparent intersection with City of Iowa City Corporate Limits; then continuing to trace the Corporate Limits east to the point of beginning.

Precinct 13: Beginning at the intersection of Marietta Avenue and George Street, south along George Street to its apparent intersection with the City of Iowa City Corporate Limits; west along the Corporate Limits to the point of apparent intersection with Sunset Street; south on Sunset Street to W Benton Street; east on W Benton Street to Wylde Green Road; south along Wylde Green Road to Edingale Drive; northeast on Edingale Drive to Weeber Street; north following Weeber Street to W Benton Street; east on W Benton Street to its apparent intersection with the centerline of the Iowa River; northwest along the centerline of the Iowa River to its apparent intersection with the Iowa Interstate Railroad; generally northwest following the Iowa Interstate Railroad to its apparent intersection with the Corporate Limits; generally southwest following the Corporate Limits to their apparent intersection with Marietta Avenue; then west along Marietta Avenue to the point of beginning.

Precinct 14: Beginning at the intersection of S Summit Street and Kirkwood Avenue, west on Kirkwood Avenue to its intersection with Marcy Street; south on Marcy Street to Highland Avenue; west on Highland Avenue to Marcy Street; south on Marcy Street to Plum Street; northwest on Plum Street to Keokuk Street; south on Keokuk Street to Sandusky Drive; east following Sandusky Street to Bancroft Drive; north on Bancroft Drive to Crosby Lane; east on Crosby Lane to

Sycamore Street; north on Sycamore Street to Lower Muscatine Road; northwest on Lower Muscatine Road to its intersection with Pine Street; north on Pine Street to the apparent intersection of Pine Street's centerline extended with the Iowa Interstate Railroad; west along the Iowa Interstate Railroad to its apparent intersection with S Summit Street; then south on S Summit Street to the point of beginning.

Precinct 15: Beginning at the intersection of Pine Street and Lower Muscatine Road, southeast along Lower Muscatine Road to Sycamore Street; south on Sycamore Street to Crosby Lane; west on Crosby Lane to Bancroft Drive; south on Bancroft Drive to Sandusky Drive; west on Sandusky Drive to Taylor Drive; south on Taylor Drive to Burns Avenue; east on Burns Avenue to Russell Drive; south on Russell Drive to Wetherby Drive; east on Wetherby Drive, and continuing on Lakeside Drive, to Miami Drive; northeast on Miami Drive to Nevada Avenue; southeast on Nevada Avenue to Lakeside Drive; generally northeast along Lakeside Drive, continuing on Industrial Park Road, to the apparent intersection of its centerline extended and the Iowa Interstate Railroad; northwest following the Iowa Interstate Railroad to its apparent intersection with the extended centerline of Pine Street; then south on Pine Street to the point of beginning.

Precinct 16: Beginning at the intersection of N 1st Avenue and Rochester Avenue, west along Rochester Avenue to N 7th Avenue; south on N 7th Avenue to Muscatine Avenue; southeast along Muscatine Avenue to Willow Street; north on Willow Street to Eastwood Drive; west on Eastwood Drive to Brookside Drive; west on Brookside Drive to Meadow Street; north on Meadow Street to Friendship Street; east on Friendship Street to Kenwood Drive; north on Kenwood Drive to E Court Street; west on E Court Street to Washington Park Road; north on Washington Park Road to Potomac Drive; west and north on Potomac Drive to E Washington Street; west on E Washington Street to N 1st Avenue; then north on N 1st Avenue to the point of beginning.

Precinct 17: Beginning at the intersection of N 7th Avenue and Rochester Avenue, west on Rochester Avenue to Parsons Avenue; south on Parsons Avenue to E Jefferson Street; west on E Jefferson Street to N Dodge Street/Highway 1; south on N Dodge Street/Highway 1 to E Iowa Avenue; west on E Iowa Avenue to S Johnson Street; south on S Johnson Street to E Burlington Street/Highway 1; east on E Burlington Street/Highway 1 to S Dodge Street; south on S Dodge Street to Bowery Street; east on Bowery Street to S Governor Street; north on S Governor Street E Burlington Street/Highway 1; east on E Burlington Street to Muscatine Avenue; southeast along Muscatine Avenue to S 7th Avenue; then north on S 7th Avenue to the point of beginning.

Precinct 18: Beginning at the intersection of Muscatine Avenue and E Burlington Street, west on E Burlington Street to S Governor Street/Highway 1; south on S Governor Street to Bowery Street; west on Bowery Street to S Gilbert Street; south on S Gilbert Street to its apparent intersection with the Iowa Interstate Railroad; east along the Iowa Interstate Railroad to its apparent intersection with S Dodge Street; south on S Dodge Street to Page Street; east on Page Street to S Lucas Street; south on S Lucas Street to Kirkwood Avenue; east on Kirkwood Avenue to S Summit Street; north on S Summit Street to its apparent intersection with the Iowa Interstate Railroad; southeast along the Iowa Interstate Railroad to its apparent intersection with 2nd Avenue extended; north on 2nd Avenue to J Street; west on J Street to 3rd Avenue; north on 3rd Avenue to I Street; west on I Street to 5th Avenue; north on 5th Avenue to F Street; east on F Street and north on 4th Avenue to Muscatine Avenue; then northwest on Muscatine Avenue to the point of beginning.

Precinct 19: Beginning at the intersection of S Van Buren Street and E College Street, west on E College Street to S Linn Street; south on S Linn Street to E Burlington Street/Highway 1; west on E Burlington Street/Highway 1 to S Dubuque Street; south on S Dubuque Street to E Court Street; east on E Court Street to S Linn Street; south on S Linn Street to Maiden Lane; east on Maiden Lane following the curve north to E Court Street; east on E Court Street to S Gilbert Street; south on S Gilbert Street to Bowery Street; east on Bowery Street to S Dodge Street; north on S Dodge Street to E Burlington Street/Highway 1; west on E Burlington Street/Highway 1 to S Van Buren Street; then north on S Van Buren Street to the point of beginning.

Precinct 20: Beginning at the intersection of E Davenport Street and N Dubuque Street, west on E Davenport Street to N Capitol Street; south along the apparent centerline of N Capitol Street to E Jefferson Street; east on E Jefferson Street to N Clinton Street; south on N Clinton Street to E Iowa Avenue; east on E Iowa Avenue to S Dubuque Street; south on S Dubuque Street to E College Street; east along the apparent centerline of E College Street to S Van Buren Street; south

on S Van Buren Street to E Burlington Street/Highway 1; east on E Burlington Street/Highway 1 to S Johnson Street; north on S Johnson Street to E Market Street; west on E Market Street to N Dubuque Street; then north on N Dubuque Street to the point of beginning.

Precinct 21: Beginning at the intersection of N Governor Street and Kimball Road, southwest along Kimball Road to N Dubuque Street; south on N Dubuque Street to Fairchild Street; west on Fairchild Street to N Clinton Street; south on N Clinton Street to E Davenport Street; east on E Davenport Street to N Dubuque Street; south on N Dubuque Street to E Market Street; east on E Market Street to N Johnson Street; south on N Johnson Street to E Iowa Avenue; east along E Iowa Avenue to N Dodge Street/Highway 1; north on N Dodge Street/Highway 1 to E Jefferson Street; east on E Jefferson Street to N Governor Street/Highway 1; north on N Governor Street/Highway 1 to its intersection with N Dodge Street/Highway 1; then continuing along N Governor Street to the point of beginning.

Precinct 22: Beginning at the intersection of N Governor Street and Kimball Road, south on N Governor Street to its intersection with N Dodge Street/Highway 1; northeast on N Dodge Street/Highway 1 to N Summit Street/Prairie Du Chien Road; north along Prairie Du Chien Road to its apparent intersection with the City of Iowa City Corporate Limits; then tracing the Corporate Limits east to the apparent intersection with the East Lucas Township boundary line; continuing along said boundary line north, then west to the apparent intersection with the centerline of the Iowa River; then continuing south along the centerline of the Iowa River to the apparent intersection with the southwest parcel line of Outlot "A" of Oakmont Estates subdivision; southeast along the aforementioned parcel line to the point of intersection with the parcel line of lot 110 of the Peninsula Neighborhood Phase 2A subdivision; then southwest following said parcel line to the terminus of Foster Road; generally east following the curvature of Foster Road to N Dubuque Street; south along the centerline of the southbound lanes of N Dubuque Street a point approximately adjacent to 1032 N Dubuque Street, then following the centerline of the northbound lanes of N Dubuque Street to the intersection with Kimball Road; then generally northeast along Kimball Road to the point of beginning.

Precinct 23: Beginning at the intersection of N Governor Street/Highway 1 and E Jefferson Street, east along E Jefferson Street to Parsons Avenue; north on Parsons Avenue to Rochester Avenue; east along Rochester Avenue and continuing on Herbert Hoover Highway to the point of apparent intersection with the City of Iowa City Corporate Limits; tracing the Corporate Limits north, then west, to their intersection with Prairie Du Chien Road; south along Prairie Du Chien Road to N Dodge Street/Highway 1; southwest along N Dodge Street/Highway 1 to N Governor Street/Highway 1; then south along N Governor Street/Highway 1 to the point of beginning.

Precinct 24: Beginning at the intersection of Taft Avenue SE and E Court Street, west along E Court Street to Kenwood Drive; south on Kenwood Drive to Friendship Street; southwest on Friendship Street to Meadow Street; southeast on Meadow Street to Brookside Drive; east on Brookside Drive to Eastwood Drive; generally east on Eastwood Drive to Willow Street; south on Willow Street to Muscatine Avenue; east on Muscatine Avenue to S Scott Boulevard; south on S Scott Boulevard to the apparent intersection with the City of Iowa City Corporate Limits north of Wellington Drive; then tracing the Corporate Limit boundary generally east, then north, to the point of beginning.

Precinct 25: Beginning at the intersection of Taft Avenue SE and E Court Street, following the City of Iowa City Corporate Limits north to the intersection of Taft Avenue and Lower West Branch Road; continuing to follow the Corporate limits west to a point adjacent to Broadmoor Lane, then continuing along the Corporate Limits north and encompassing the area containing the Churchill Meadows subdivisions, then continuing along the Corporate Limits south to Lower West Branch Road; then following the Corporate Limits west and north to the apparent intersection with Herbert Hoover Highway; southwest along Herbert Hoover Highway to N Scott Boulevard; south on N Scott Boulevard to E Washington Street; west on E Washington Street to Friendship Street; south on Friendship Street to E Court Street; then east on E Court Street to the point of beginning.

Precinct 26: Beginning at the intersection of Hawkeye Park Road and N Mormon Trek Boulevard, north on N Mormon Trek Boulevard to its apparent intersection with the Iowa Interstate Railroad and the City of Iowa City Corporate Limits; northwest tracing the Corporate Limits, and continuing southwest, to the point of intersection on Kennedy Parkway; following Kennedy Parkway to the west and continuing west along the Corporate Limits to their apparent intersection

with Deer Creek Road SE; tracing the Corporate Limits generally south to Melrose Avenue; east on Melrose Avenue to US Highway 218; southeast along US Highway 218 to its apparent intersection with Rohret Road; east on Rohret Road to Shannon Drive; north along Shannon Drive to Tipperary Road; generally northwest along Tipperary Road to Donegal Court; generally northeast along Donegal Court to Killarney Road; northwest along Killarney Road to Galway Drive; north on Galway Drive to Melrose Avenue; east on Melrose Avenue to Hawkeye Park Road; then north and east along Hawkeye Park Road to the point of beginning.

Precinct 27: Beginning at the intersection of Keokuk Street and Southgate Avenue, west along Southgate Avenue to its apparent intersection with the CRANDIC Railroad; south along the CRANDIC Railroad to its apparent intersection with S Gilbert Street; south on S Gilbert Street to its intersection with the City of Iowa City Corporate Limits; east along the Corporate Limit boundary, tracing the boundary south, to its intersection with Sycamore Street SE; north on Sycamore Street SE to its apparent intersection with the Corporate Limits; east along this boundary, and continuing along the southern boundary of the Sycamore Woods Part 5 and Whispering Meadows Part 2 subdivisions to their apparent intersection with Whispering Meadows Drive; following Whispering Meadows Drive north and then west to its apparent intersection with the Sycamore Greenway Trail; north along the Sycamore Greenway Trail to Lakeside Drive; west on Lakeside Drive and continuing on Wetherby Drive to Russell Drive; north on Russell Drive to Burns Avenue; west on Burns Avenue to Taylor Drive; north on Taylor Drive to Sandusky Drive; west following Sandusky Drive to Keokuk Street; then north on Keokuk Street to the point of beginning.

City of Iowa City Proposed Plan A With Council Districts

Precinct	Population	Council District
Iowa City 1	2739	B
Iowa City 2	2969	A
Iowa City 3	3353	C
Iowa City 4	2413	C
Iowa City 5	3388	C
Iowa City 6	3034	B
Iowa City 7	1947	A
Iowa City 8	2496	A
Iowa City 9	3203	A
Iowa City 10	2525	A
Iowa City 11	2974	C
Iowa City 12	2997	A
Iowa City 13	3169	A
Iowa City 14	2573	B
Iowa City 15	2381	B
Iowa City 16	2929	B
Iowa City 17	3080	B
Iowa City 18	2175	B
Iowa City 19	3182	C
Iowa City 20	2978	C
Iowa City 21	2783	C
Iowa City 22	2583	C
Iowa City 23	2510	B
Iowa City 24	2665	B
Iowa City 25	2439	C
Iowa City 26	2896	A
Iowa City 27	2447	A

Late Handouts Distributed

12-14-21

(Date)



	Pop.	Comb. Precincts	Tot. Pop.
East Lucas North	232	IC22/ELN	2,815
Iowa City 22	2,583	IC22/ELN	
East Lucas SE	14	IC15/ELSE	2,395
Iowa City 15	2,381	IC15/ELSE	
East Lucas SW	234	IC10/ELSW	2,759
Iowa City 10	2,525	IC10/ELSW	

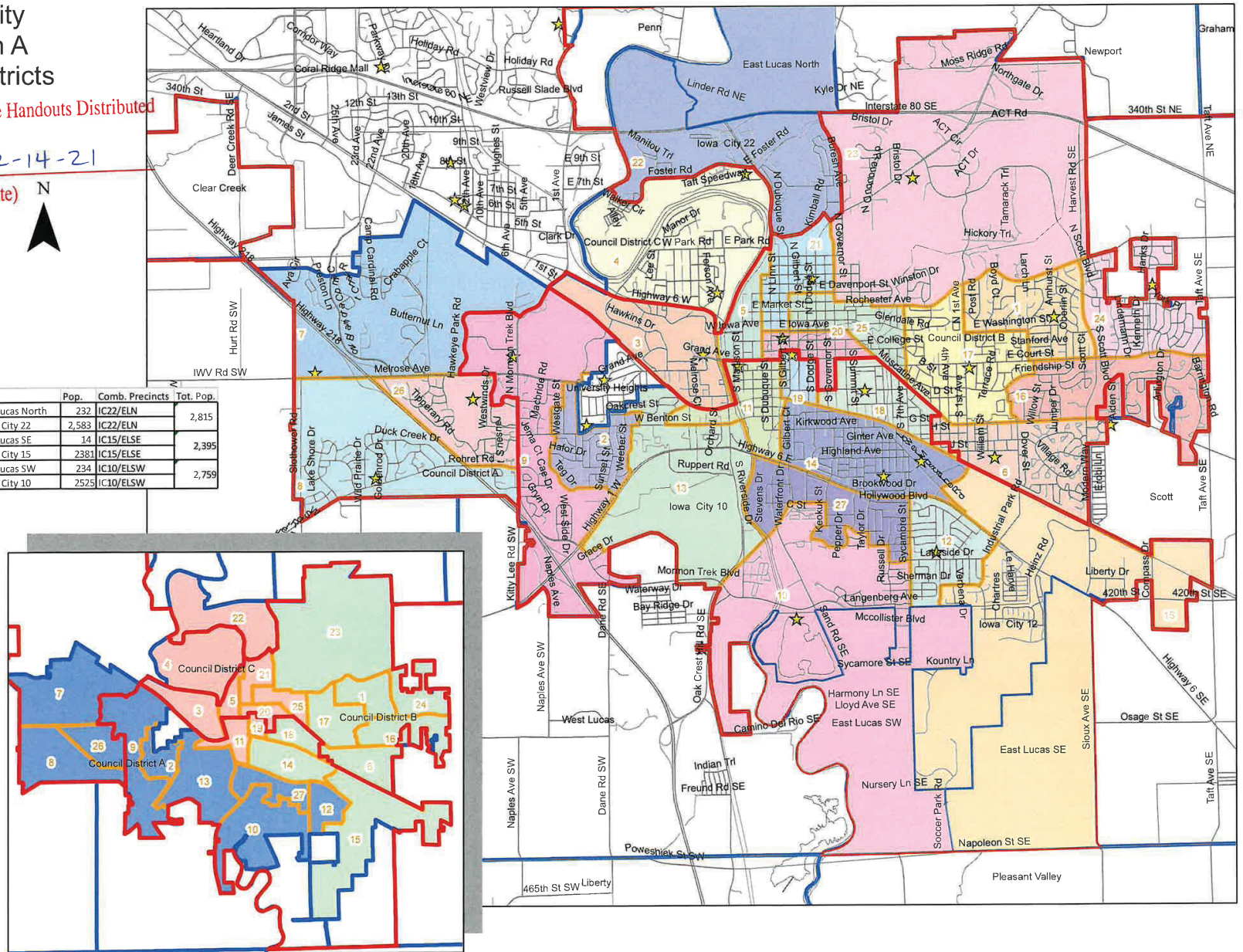
Legend

- House District boundaries
- City & Township boundaries
- Census blocks
- Proposed Precincts
- ★ Current Polling Place Locations

Proposed Council Dists. (inset)

- Council District A
- Council District B
- Council District C

Council District	Population
Council District A	24,649
Council District B	24,086
Council District C	26,093



City of Iowa City Proposed Plan C With Council Districts

Precinct	Population	Council District
Iowa City 1	2,894	B
Iowa City 2	2,848	A
Iowa City 3	2,856	C
Iowa City 4	2,413	C
Iowa City 5	2,920	C
Iowa City 6	2,875	B
Iowa City 7	2,409	A
Iowa City 8	2,496	A
Iowa City 9	2,729	A
Iowa City 10	2,757	A
Iowa City 11	2,794	C
Iowa City 12	2,761	B
Iowa City 13	2,783	C
Iowa City 14	2,817	A
Iowa City 15	2,779	A
Iowa City 16	2,884	B
Iowa City 17	2,937	B
Iowa City 18	2,758	B
Iowa City 19	2,737	C
Iowa City 20	2,968	C
Iowa City 21	2,905	C
Iowa City 22	2,583	C
Iowa City 23	2,865	B
Iowa City 24	2,883	B
Iowa City 25	2,911	B
Iowa City 26	2,434	A
Iowa City 27	2,832	A

Late Handouts Distributed

12-14-21

(Date)



	Pop.	Comb. Precincts	Tot. Pop.
East Lucas North	232	IC22/ELN	2,815
Iowa City 22	2,583	IC22/ELN	2,815
East Lucas SE	14	IC15/ELSE	2,775
Iowa City 12	2,761	IC15/ELSE	2,775
East Lucas SW	234	IC10/ELSW	2,991
Iowa City 10	2,757	IC10/ELSW	2,991

Legend

- House District boundaries
- City & Township boundaries
- Census blocks

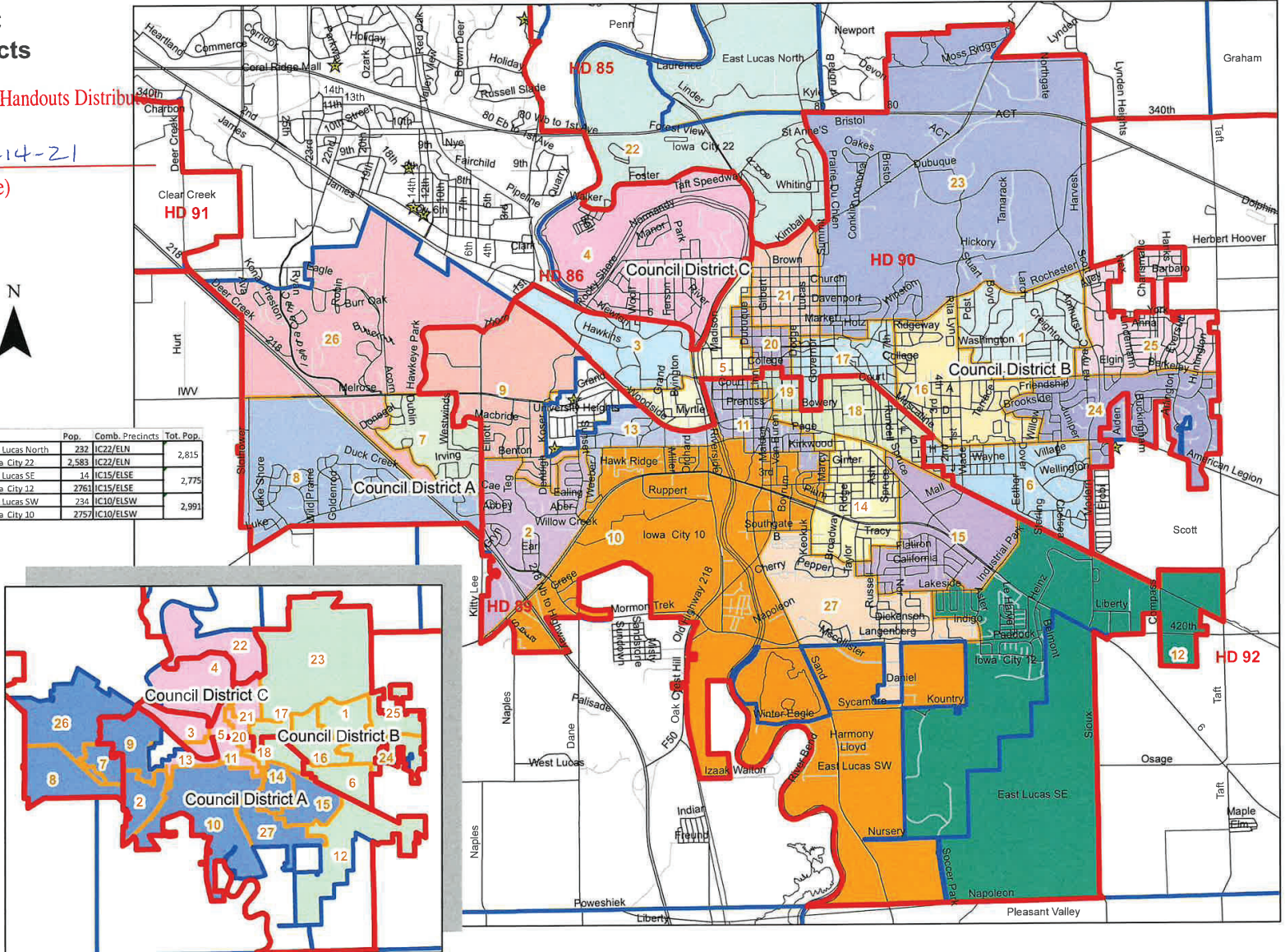
Proposed Precincts

- Proposed Precincts
- Current Polling Place Locations

Proposed Council Dists. (Inset)

- Council District A
- Council District B
- Council District C

Council District	Population
Council District A	24,101
Council District B	25,768
Council District C	24,959



Late Handouts Distributed

12-13-21

(Date)



CITY OF IOWA CITY

410 East Washington Street
Iowa City, Iowa 52240-1826
(319) 356-5000
(319) 356-5009 FAX
www.icgov.org

City Council Agenda – December 14, 2021 – Special Formal Meeting

Information submitted between distribution of packet on Thursday and 4:30pm on Monday.

Late Handouts(s):

Regular Formal Agenda

10. Reprecincting - See the following:
 - a. 12/13/21 - Map A with Council Districts listed
 - b. 12/13/21 – Map A with Precincts and Council Dist inset
 - c. Map A Legal description
 - d. Map C Legal Description
 - e. Map A and C showing the previous precinct lines as dashed white lines
11. Proposed South District Self Supported Municipal Improvement District (SSMID) (See correspondence from Dorothy Whiston, Susan Blanchard, Liz, Liddle, V. Fixmer-Oraiz, Temple Hiatt, Barbara Anderson, James Pobst, Carrie Norton)

City of Iowa City Proposed Plan A With Council Districts

Precinct	Population	Council District
Iowa City 1	2739	B
Iowa City 2	2969	A
Iowa City 3	3353	C
Iowa City 4	2413	C
Iowa City 5	3388	C
Iowa City 6	3034	B
Iowa City 7	1947	A
Iowa City 8	2496	A
Iowa City 9	3203	A
Iowa City 10	2525	A
Iowa City 11	2974	C
Iowa City 12	2997	A
Iowa City 13	3169	A
Iowa City 14	2573	B
Iowa City 15	2381	B
Iowa City 16	2929	B
Iowa City 17	3080	B
Iowa City 18	2175	B
Iowa City 19	3182	C
Iowa City 20	2978	C
Iowa City 21	2783	C
Iowa City 22	2583	C
Iowa City 23	2510	B
Iowa City 24	2665	B
Iowa City 25	2439	C
Iowa City 26	2896	A
Iowa City 27	2447	A

Late Handouts Distributed

12-13-21

(Date)

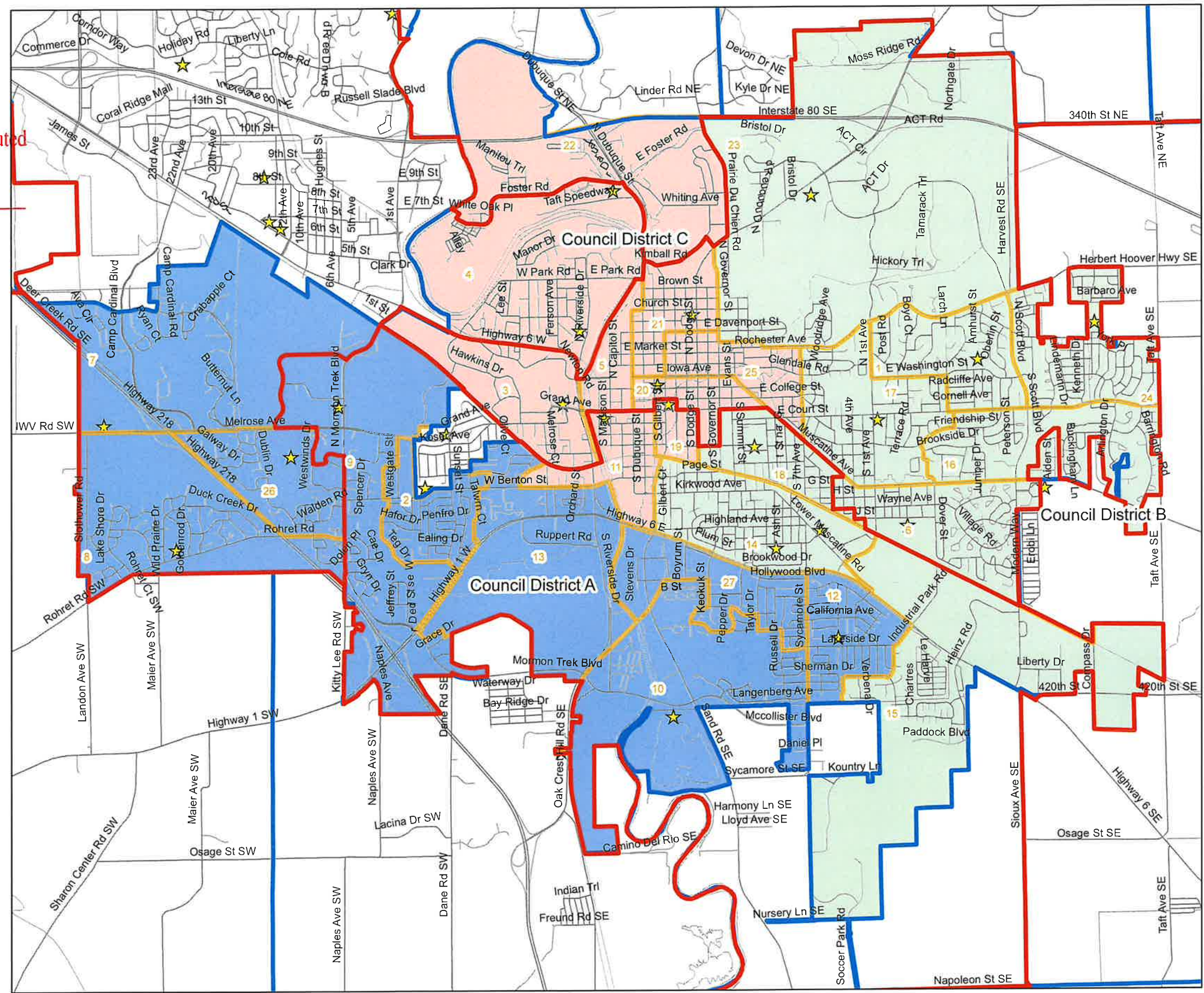


- Legend**
- House District boundaries
 - City & Township boundaries
 - Census blocks
 - Proposed Precincts
 - ★ Current Polling Place Locations

Proposed Council Dists. (inset)

- Council District A
- Council District B
- Council District C

Council District	Population
Council District A	24,649
Council District B	24,086
Council District C	26,093



City of Iowa City Proposed Plan A With Council Districts

Precinct	Population	Council District
Iowa City 1	2739	B
Iowa City 2	2969	A
Iowa City 3	3353	C
Iowa City 4	2413	C
Iowa City 5	3388	C
Iowa City 6	3034	B
Iowa City 7	1947	A
Iowa City 8	2496	A
Iowa City 9	3203	A
Iowa City 10	2525	A
Iowa City 11	2974	C
Iowa City 12	2997	A
Iowa City 13	3169	A
Iowa City 14	2573	B
Iowa City 15	2381	B
Iowa City 16	2929	B
Iowa City 17	3080	B
Iowa City 18	2175	B
Iowa City 19	3182	C
Iowa City 20	2978	C
Iowa City 21	2783	C
Iowa City 22	2583	C
Iowa City 23	2510	B
Iowa City 24	2665	B
Iowa City 25	2439	C
Iowa City 26	2896	A
Iowa City 27	2447	A

Late Handouts Distributed

12-13-21
(Date)



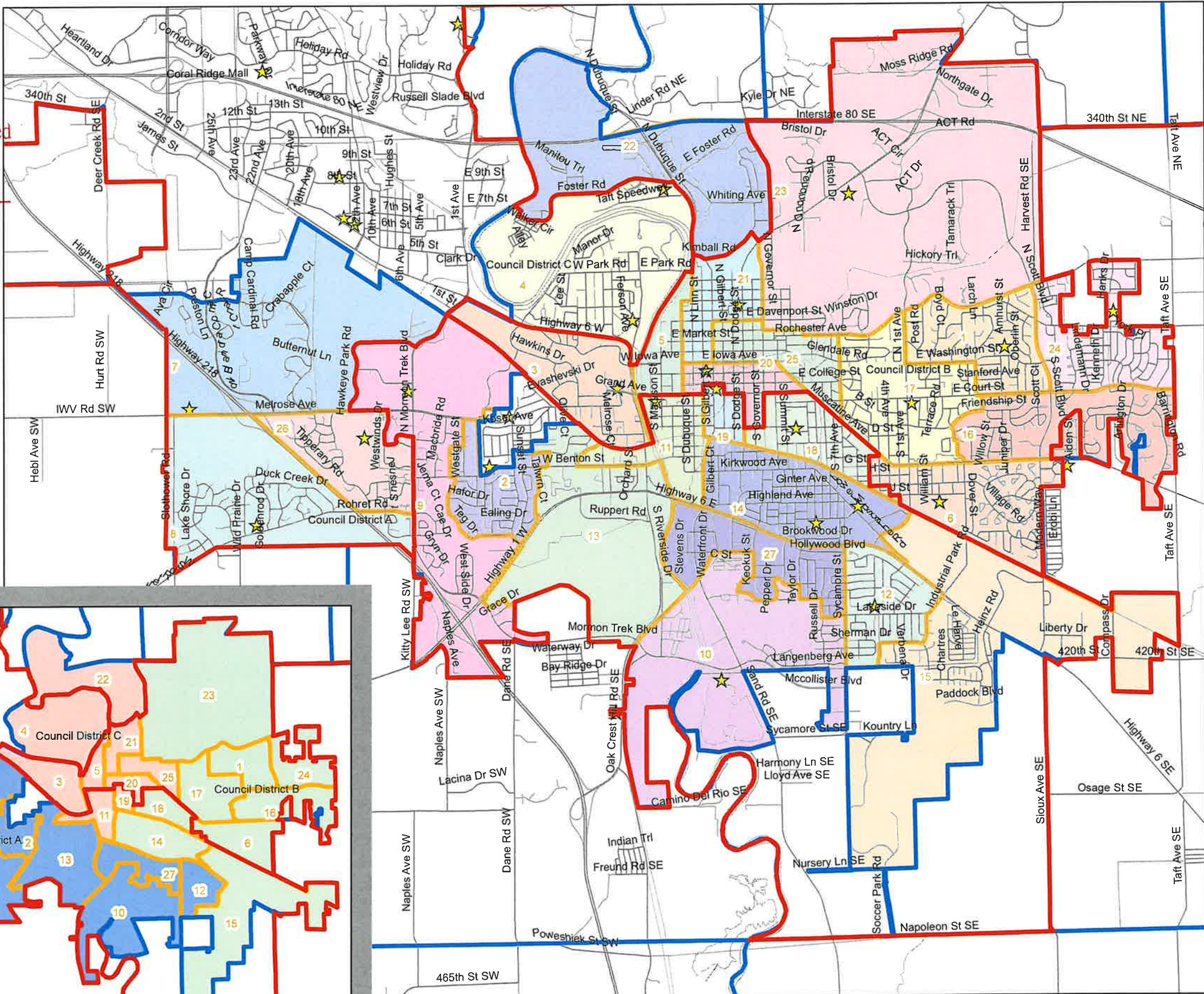
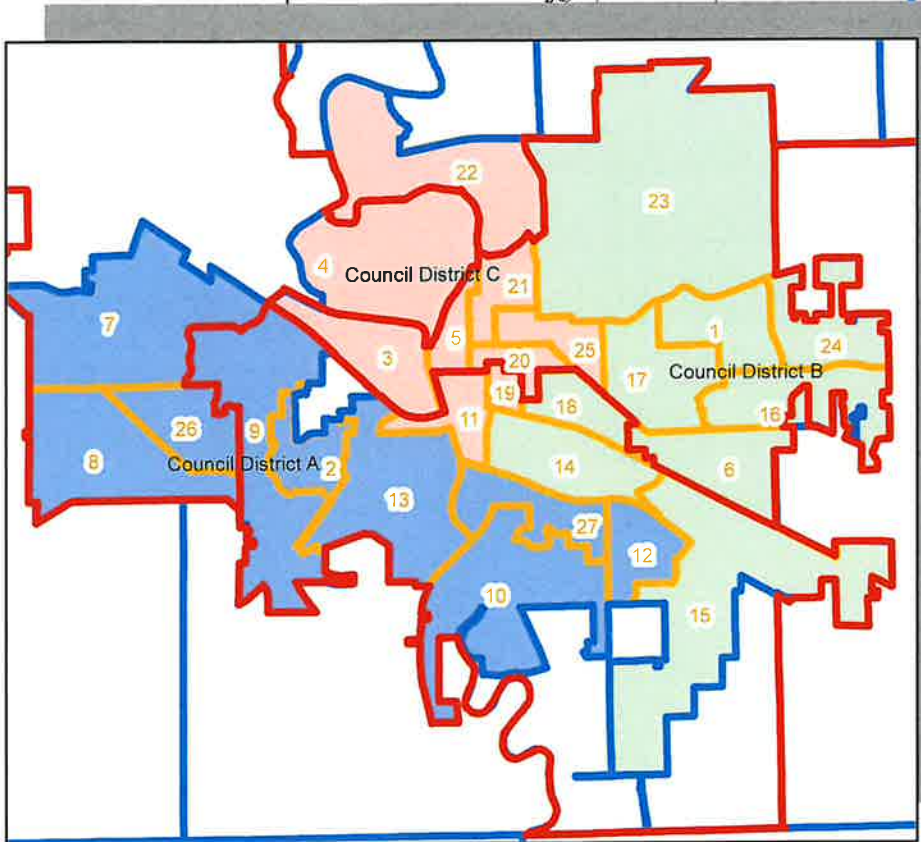
Legend

- House District boundaries
- City & Township boundaries
- Census blocks
- Proposed Precincts
- ★ Current Polling Place Locations

Proposed Council Dists. (inset)

- Council District A
- Council District B
- Council District C

Council District	Population
Council District A	24,649
Council District B	24,086
Council District C	26,093



Plan A Legal Descriptions

Late Handouts Distributed

City Council District Descriptions:

Council District A: Voting Precincts: 2, 7, 8, 9, 10, 12, 13, 26, 27

Council District B: Voting Precincts: 1, 6, 14, 15, 16, 17, 18, 23, 24

Council District C: Voting Precincts: 3, 4, 5, 11, 19, 20, 21, 22, 25

12-13-21

(Date)

Precinct Legal Descriptions:

Precinct 1: Beginning at the intersection of S Scott Boulevard and E Court Street, proceeding north along the centerline of Scott Boulevard to Rochester Avenue; west on Rochester Avenue to the intersection at N 1st Avenue; south on N 1st Avenue to E Washington Street; east along E Washington Street to S Westminster Street; south along S Westminster Street to E Court Street; then east along E Court Street to the point of beginning.

Precinct 2: Beginning at the intersection of Emerald Street and Melrose Avenue, proceeding west along Melrose Avenue to its intersection with Westgate Street; following Westgate Avenue south to the Keswick Drive; west along Keswick Drive, curving south, to the intersection of Keswick Drive and W Benton Street; east on W Benton Street to Teg Drive, thence south on Teg Drive and east along Aber Avenue to the intersection of Aber Avenue and Sunset Street; southeast along Sunset Street to the intersection at Highway 1 W; northeast along the centerline of the southwest-bound lanes on Highway 1 W to a point at the apparent intersection of the centerline of Weeber Street extended and Highway 1 W; northwest to the centerline at the easterly termination of Edingale Drive pavement, then southwest along Edingale Drive to its intersection with Weeber Street; north on Weeber Street to W Benton Street; east on W Benton Street to Oaknoll Drive; north along Oaknoll Drive to Oakcrest Street; west on Oakcrest Street to George Street; north along George Street to the point of apparent intersection with the City of Iowa City Corporate Limits; generally west along said Corporate Limits to their intersection with Sunset Street; south along Sunset Street to W Benton Street; west on W Benton Street to Emerald Street; north along Emerald Street to the point of beginning.

Precinct 3: Beginning at the intersection of US Highway 6 W and 1st Avenue, following 1st Avenue southwest towards the Iowa Interstate Railroad Bridge, then tracing the path of the Iowa Interstate Railroad generally southeast to its apparent intersection with the western bank of the Iowa River; north along the western bank of the Iowa River to the apparent intersection with W Iowa Avenue; west along W Iowa Avenue to S Riverside Drive/US Highway 6; thence generally northwest along S Riverside Drive/US Highway 6 to the point of beginning.

Precinct 4: From the point of beginning at the intersection N Dubuque Street and Foster Road, west along Foster Road to its terminus at Walker Circle; northeast following the northwest parcel line of lot 110 of the Peninsula Neighborhood Phase 2A subdivision; northwest following the southwest parcel line of Outlot "A" of Oakmont Estates subdivision to the southern bank of the Iowa River, and continuing to the apparent intersection of said parcel line extended with the City of Iowa City Corporate Limits; generally south following the Corporate Limits to the point at which they intersect with Riverside Drive/US Highway 6 W; generally southeast along Riverside Drive/US Highway 6 W to W Iowa Avenue, then east along W Iowa Avenue to the apparent intersection with the centerline of the Iowa River; north following the centerline of the Iowa River to its apparent intersection with E Park Road; east on E Park Road to N Dubuque Street; generally north following the centerline of N Dubuque Street to a point approximately adjacent to the property 1032 N Dubuque Street, then generally north following the centerline of the southbound lanes of N Dubuque Street to the point of beginning.

Precinct 5: Beginning at the intersection of N Dubuque Street and E Park Road, west on E Park road to the apparent intersection with the centerline of the Iowa River, thence southwest following the centerline of the Iowa River to its apparent intersection with W Iowa Avenue; west along W Iowa Avenue to its apparent intersection with the western bank of the Iowa River; south along the western bank of the Iowa River to the apparent intersection with the centerline

of the eastbound lanes of W Burlington Street/Highway 1; east along the centerline of the eastbound lanes of W Burlington Street/Highway 1 to the CRANDIC Railroad; then east along the centerline of W Burlington Street/Highway 1 to the intersection with S Clinton Street; north along Clinton Street to Church Street, then continuing east on Church Street to its intersection with N Dubuque Street; then north on N Dubuque Street to the point of beginning.

Precinct 6: Beginning at the intersection of Muscatine Avenue and 4th Avenue, south along 4th Avenue to F Street; west along F Street to its intersection with 5th Avenue, then following 5th Avenue south to I Street; east along I Street to 3rd Avenue; south on 3rd Avenue to J Street; east on J Street to 2nd Avenue; south along 2nd Avenue to the extended centerline's apparent intersection with the Iowa Interstate Railroad; following the Iowa Interstate Railroad southeast to the point at which it crosses the City of Iowa City Corporate Limits; north following the Corporate Limits to the point at which it intersects American Legion Road, east of the Silvercrest Way and American Legion Road intersection; then west along American Legion Road, continuing on Muscatine Avenue, to the point of beginning.

Precinct 7: Beginning at the intersection of Melrose Avenue and Hawkeye Park Road, following Hawkeye Park Road to the north and east to its terminus at the intersection with N Mormon Trek Boulevard; northeast along N Mormon Trek Boulevard to its apparent intersection with the Iowa Interstate Railroad at City of Iowa City Corporate Limits; tracing the Corporate Limits generally west-northwest to a point on Deer Creek Road SE, then continuing to follow the Corporate Limit boundary south, to its intersection with Melrose Avenue west of Slothower Road; then east on Melrose Avenue to the point of beginning.

Precinct 8: Beginning at the intersection of Rohret Road and Mormon Trek Boulevard, following Rohret Road west to its apparent intersection with US Highway 218; northwest on US Highway 218 to its apparent intersection with Melrose Avenue; west along Melrose Avenue to the City of Iowa City Corporate Limits; then tracing the Corporate Limits south, then generally east, to the apparent intersection of the centerline of Kitty Lee Road extended, southwest of Mormon Trek Boulevard; then proceeding north, continuing on Mormon Trek Boulevard, to the point of beginning.

Precinct 9: Beginning at the intersection of N Mormon Trek Boulevard and Hawkeye Park Road, following Hawkeye Park Road generally west and south to its terminus at Melrose Ave; east along Melrose Avenue to Westwinds Drive; south on Westwinds Drive to Roberts Road; east along Roberts Road to Bartelt Road; generally north along Bartelt Road following the curve to Mormon Trek Boulevard; south along Mormon Trek Boulevard to a point that is approximately adjacent to the intersection of Mormon Trek Boulevard and Plaen View Drive, then continuing south along the centerline of Kitty Lee Road extended, and eventually tracing the City of Iowa City Corporate Limits generally south then east then north to the point at which the Corporate Limit boundary intersects Grace Drive; northwest following the western boundary of the Iowa City Municipal Airport parcel to its apparent intersection with the centerline of the southbound lanes of Highway 1 W; northeast following said centerline to Sunset Street; northwest along Sunset Street to Aber Avenue; west on Aber Avenue, then generally north on Teg Drive to W Benton Street; west along W Benton Street to Keswick Drive; north on Keswick Drive, following the curve, to Westgate Street; north on Westgate Street to Melrose Avenue; east on Melrose Avenue to its apparent intersection with the Corporate Limits; following the Corporate Limits generally northeast to the apparent intersection with the Iowa Interstate Railroad; northwest following the Iowa Interstate Railroad to its apparent intersection with Mormon Trek Boulevard; then south along Mormon Trek Boulevard to the point of beginning.

Precinct 10: Beginning at the intersection of Sycamore Street and Wetherby Drive, heading west along Wetherby Drive to Russell Drive; north on Russell Drive to Burns Avenue; west on Burns Avenue to Taylor Drive; north on Taylor Drive to Sandusky Drive; generally west on Sandusky Drive to Pepper Drive; following Pepper Drive south then generally west along its curve to the intersection with Sandusky Drive; northeast on Sandusky Drive to Keokuk Street; north on Keokuk Street to Southgate Avenue; west on Southgate Avenue to its apparent intersection with the CRANDIC Railroad; following the CRANDIC Railroad southwest to its apparent intersection with the City of Iowa City Corporate Limits and then continuing along said limits generally south, then east, to the point of apparent intersection of said limits and Sycamore Street, north of the intersection of Sycamore St SE and Lehman Avenue; then north along Sycamore Street to the point of beginning.

Precinct 11: Beginning at the intersection of E Burlington Street and S Linn Street, following E Burlington Street/Highway 1 west to its apparent intersection with the western bank of the Iowa River, continuing south along the western bank of the Iowa River to its apparent intersection with the Iowa Interstate Railroad; west along the Iowa Interstate Railroad to its apparent intersection with Greenwood Drive; southwest along Greenwood Drive to W Benton Street; east along W Benton Street to its apparent intersection with the centerline of the Iowa River; south along the centerline of the Iowa River to its apparent intersection with US Highway 6 E; following US Highway 6 E east to the intersection with S Gilbert Street; north along S Gilbert Street to its apparent intersection with Iowa Interstate Railroad; west, following the path of the Iowa Interstate Railroad, to its apparent intersection with the centerline of Ralston Creek; north along the centerline of Ralston Creek to its apparent intersection with E Prentiss Street; north from the center of the intersection of E Prentiss Street and S Linn Street to the point of beginning.

Precinct 12: Beginning at the intersection of US Highway 6 E and Sycamore Street, south along Sycamore Street to the apparent intersection with City of Iowa City's Corporate Limits, then east to its intersection with the Sycamore Greenway Trail; following the Sycamore Greenway Trail north to its apparent intersection with the centerline of Whispering Meadow Drive extended; east along Whispering Meadow Drive to Whispering Prairie Avenue; north along Whispering Prairie Avenue to Lakeside Drive; northeast along Lakeside Drive to the centerline of the northwest bound travel lanes of US Highway 6 E; northwest following said centerline of US Highway 6 E to the point of beginning.

Precinct 13: Beginning at the intersection of W Benton Street and Weeber Street, south on Weeber Street to Edingale Drive; east along Edingale Drive to its terminus, then in a southeast trajectory to a point of intersection with the centerline of the southbound travel lanes of Highway 1 W; southwest along the centerline of the southbound travel lanes of Highway 1 W to Mormon Trek Boulevard; southeast along Mormon Trek Boulevard to the point of apparent intersection with the northern boundary of JJR Davis Fourth Addition, along the property line of the Iowa City Municipal Airport; east following the aforementioned property line to its apparent intersection with the City of Iowa City Corporate Limits near Grace Drive; tracing the Corporate Limits, generally southeastern, to the apparent intersection with the CRANDIC Railroad southwest of the intersection of Old Highway 218 and Mormon Trek Boulevard/McCollister Boulevard; northeast following the CRANDIC Railroad to its apparent intersection with the centerline of the Iowa River; generally north following the centerline of the Iowa River to its apparent intersection with W Benton Street; west along W Benton Street to Greenwood Drive; northeast along Greenwood Drive to the apparent intersection with the Iowa Interstate Railroad; northwest along the Iowa Interstate Railroad to the point of apparent intersection with the Corporate Limits; tracing the Corporate Limits generally southwest to the apparent intersection with George Street; south along George Street to Oakcrest Street; east along Oakcrest Street to Oaknoll Drive; south along Oaknoll Drive to W Benton Street; then west on W Benton Street to the point of beginning.

Precinct 14: Beginning at the intersection of US Highway 6 E and S Gilbert Street, following the centerline of the northeast bound travel lanes of US Highway 6 E southwest to Plum Street, then following the centerline of the southeast bound travel lanes of US Highway 6 E southwest, to Sycamore Street; then following the centerline of the southeast bound travel lanes of US Highway 6 E southwest to the intersection with Fairmeadows Boulevard; following Fairmeadows Boulevard to the northeast to Lower Muscatine Road; northwest along Lower Muscatine Road to S 1st Avenue; northeast along S 1st Avenue to the apparent intersection with the Iowa Interstate Railroad; following the Iowa Interstate Railroad generally northwest to its apparent intersection with S Gilbert Street; then south along S Gilbert Street to the point of beginning.

Precinct 15: Beginning at the intersection of 420th Street and US Highway 6 SE, following the City of Iowa City Corporate Limits east and continuing to trace the boundary until the apparent intersection of the Corporate Limits with the Iowa Interstate Railroad, north of the terminus of Compass Drive; northwest along the Iowa Interstate Railroad to its apparent intersection with S 1st Avenue; southwest along S 1st Avenue to Lower Muscatine Road; southeast along Lower Muscatine Road to Fairmeadows Boulevard; southwest along Fairmeadows Boulevard to the centerline of the northeast bound travel lanes of US Highway 6 E; southeast following said centerline to Industrial Park Road; southwest along the centerline of Industrial Park Road and continuing along the centerline of Lakeside Drive to Whispering Prairie Avenue; south on Whispering Prairie Avenue to Whispering Meadow Drive; west on Whispering Meadow Drive to a point at the

approximate apparent intersection of the centerline of Whispering Meadow Drive extended and the Sycamore Greenway Trail; south along the Sycamore Greenway Trail to the apparent intersection with the Corporate Limits; tracing the Corporate Limit boundary south to a point near Napoleon Street SE; then continuing to trace the Corporate Limit boundary north to the point of beginning.

Precinct 16: Beginning at the intersection of Taft Avenue SE and E Court Street, following E Court Street west to the intersection with Kenwood Drive; south on Kenwood Drive to Friendship Street; southwest on Friendship Street to Meadow Street; south on Meadow Street to Dover Street; south along Dover Street to its intersection with Muscatine Avenue; then east following Muscatine Avenue and continuing east on American Legion Road to the apparent intersection with the City of Iowa City Corporate Limits; then tracing the Corporate Limits back to the point of beginning.

Precinct 17: Beginning at the intersection of E Washington Street and S Westminster Street, west along E Washington Street to N 1st Avenue; north on N 1st Avenue to Rochester Avenue; west on Rochester Avenue to N 7th Avenue; south following N 7th Avenue to its intersection with Muscatine Avenue; southeast following Muscatine Avenue to Dover Street; north on Dover Street, and continuing north on Meadow Street to the intersection of Meadow Street and Friendship Street; northeast on Friendship Street to Kenwood Drive; north on Kenwood Drive to E Court Street; west on E Court Street to S Westminster Street; then north on Westminster Street to the point of beginning.

Precinct 18: Beginning at the intersection of Muscatine Avenue and E Burlington Street, west along E Burlington Street to S Governor Street; south on S Governor Street to Bowery Street; west on Bowery Street to S Dodge Street; south on Dodge Street to its apparent intersection with the Iowa Interstate Railroad; southeast along the Iowa Interstate Railroad to its apparent intersection with 2nd Avenue; north on 2nd Avenue to J Street; west on J Street to 3rd Avenue; north on 3rd Avenue to I Street; west on I Street to 5th Avenue; north on 5th Avenue to F Street; east on F Street and continuing onto 4th Avenue to the intersection with Muscatine Avenue; then northwest along Muscatine Avenue to the point of beginning.

Precinct 19: Beginning at the intersection of E Burlington Street/Highway 1 and S Van Buren Street, north on S Van Buren Street to E College Street; west on E College Street to S Linn Street; south on S Linn Street and continuing south along the centerline of Ralston Creek to its apparent intersection with the Iowa Interstate Railroad; generally east along the Iowa Interstate Railroad to its apparent intersection with S Dodge Street; north on S Dodge Street to E Burlington Street/Highway 1; then west on E Burlington Street/Highway 1 to the point of beginning.

Precinct 20: Beginning at the intersection of E Iowa Avenue and S Clinton Street, south on S Clinton Street to E Burlington Street/Highway 1; east on E Burlington Street/Highway 1 to S Linn Street; north on S Linn Street to E College Street; east on E College Street to S Van Buren Street; south on S Van Buren Street to E Burlington Street/Highway 1; east on E Burlington Street/Highway 1 to S Dodge Street/Highway 1; south along S Dodge Street to Bowery Street; east on Bowery Street to S Governor Street; north on S Governor Street to E Burlington Street/Highway 1; east on E Burlington Street to Muscatine Avenue; northwest on Muscatine Avenue to the centerline of the eastbound lane of E Iowa Avenue; then following the centerline of E Iowa Avenue to the point of beginning.

Precinct 21: Beginning at the intersection of Kimball Road and N Governor Street, generally southwest along Kimball Road to N Dubuque Street; south on N Dubuque Street to Church Street; west on Church Street and continuing south on N Clinton Street to the intersection with E Iowa Avenue; east on E Iowa Avenue to N Gilbert Street; north on N Gilbert Street to E Davenport Street; east on E Davenport Street to N Governor Street/Highway 1; north on N Governor Street/Highway 1 to the intersection with N Dodge Street/Highway 1; then north-northwest on N Governor Street to the point of beginning.

Precinct 22: Beginning at the intersection of N Governor Street and Kimball Road, south on N Governor Street to its intersection with N Dodge Street/Highway 1; northeast on N Dodge Street/Highway 1 to N Summit Street/Prairie Du Chien Road; north along Prairie Du Chien Road to its apparent intersection with the City of Iowa City Corporate Limits; then tracing the Corporate Limits west and north to the apparent intersection with the centerline of the Iowa River; then continuing along the Corporate Limits to the apparent intersection with the southwest parcel line of Outlot "A" of

Oakmont Estates subdivision; southeast along the aforementioned parcel line to the point of intersection with the parcel line of lot 110 of the Peninsula Neighborhood Phase 2A subdivision; then southwest following said parcel line to the terminus of Foster Road at Walker Circle; generally east following the curvature of Foster Road to N Dubuque Street; south along the centerline of the southbound lanes of N Dubuque Street a point approximately adjacent to 1032 N Dubuque Street, then following the centerline of the northbound lanes of N Dubuque Street to the intersection with Kimball Road; then generally northeast along Kimball Road to the point of beginning.

Precinct 23: Beginning at the intersection of N Governor Street/Highway 1 and E Bloomington Street, east on E Bloomington Street to Pleasant Street; south on Pleasant Street to Rochester Avenue; east on Rochester Avenue and continuing on to Herbert Hoover Highway to the apparent intersection with the Corporate Limits of Iowa City; following the Corporate Limits north and then west to the apparent intersection with Prairie Du Chien Road; south along Prairie Du Chien Road to N Dodge Street/Highway 1; southwest on N Dodge Street/Highway 1 to N Governor Street/Highway 1; then south on N Governor Street/Highway 1 to the point of beginning.

Precinct 24: Beginning at the intersection of Taft Avenue SE and E Court Street, following the City of Iowa City Corporate Limits north to the intersection of Taft Avenue SE and Lower West Branch Road; continuing to follow the Corporate limits west to a point adjacent to Broadmoor Lane, then continuing along the Corporate Limits north and encompassing the area containing the Churchill Meadows subdivisions, then continuing along the Corporate Limits south to Lower West Branch Road; then following the Corporate Limits west and north to the apparent intersection with Herbert Hoover Highway; southwest along Herbert Hoover Highway to N Scott Boulevard; south on N Scott Boulevard to E Court Street; then east on E Court Street to the point of beginning.

Precinct 25: Beginning at the intersection of N Governor Street/Highway 1 and E Davenport Street, west along E Davenport Street to N Gilbert Street; south on N Gilbert Street to E Iowa Avenue; east on E Iowa Avenue along the centerline of the eastbound lane to Muscatine Avenue; southeast on Muscatine Avenue to S 7th Avenue; north along S 7th Avenue to Rochester Avenue; west on Rochester Avenue to Pleasant Street; north on Pleasant Street to E Bloomington Street; then west on E Bloomington Street to N Governor Street/Highway 1; north on N Governor Street/Highway 1 to the point of beginning.

Precinct 26: Beginning at the intersection of Mormon Trek Boulevard and Bartelt Road, west along Bartelt Road to Roberts Road; west on Roberts Road to Westwinds Drive; north on Westwinds Drive to Melrose Avenue; west on Melrose Avenue to its apparent intersection with US Highway 218; southeast following US Highway 218 to its apparent intersection with Rohret Road; east along Rohret Road to Mormon Trek Boulevard; then north along Mormon Trek Boulevard to the point of beginning.

Precinct 27: Beginning at the intersection of US Highway 6 E and Sycamore Street, west along US Highway 6 E to its apparent intersection with the centerline of the Iowa River; south following the centerline of the Iowa River to the point of apparent intersection with the CRANDIC Railroad; northeast following the CRANDIC Railroad to its apparent intersection of Southgate Avenue; east along Southgate Avenue to Keokuk Street; south on Keokuk Street to Sandusky Drive; southwest following the curve of Sandusky Drive to Pepper Drive; following Pepper Drive, east and then north, to the intersection with Sandusky Drive; east on Sandusky Drive to Taylor Drive; south on Taylor Drive to Burns Avenue; east on Burns Avenue to Russell Drive; south on Russell Drive to Wetherby Drive; east on Wetherby Drive to Sycamore Street; then north on Sycamore Street to the point of beginning.

Plan C Legal DescriptionsCity Council District Descriptions:12-13-21

(Date)

Council District A: Voting Precincts: 2, 7, 8, 9, 10, 12, 13, 26, 27

Council District B: Voting Precincts: 1, 6, 14, 15, 16, 17, 18, 23, 24

Council District C: Voting Precincts: 3, 4, 5, 11, 19, 20, 21, 22, 25

Precinct 1: Beginning at the intersection of N Scott Boulevard and Rochester Avenue, west along Rochester Avenue to the intersection with N 1st Avenue; south on N 1st Avenue to E Washington Street; east on E Washington Street to Potomac Drive; south and east following the curve of Potomac Drive to its intersection with Washington Park Road; south on Washington Park Road to E Court Street; east along E Court Street to Friendship Street; north on Friendship Street to E Washington Street; east on E Washington Street to N Scott Boulevard; then north on N Scott Boulevard to the point of beginning.

Precinct 2: Beginning at the intersection of W Benton Street and Wylde Green Road, west on W Benton Street to Sunset Street; south on Sunset Street to Derwen Drive; west on Derwen Drive to Penkridge Drive; south on Penkridge Drive to Denbigh Drive; west on Denbigh Drive, following the curve, to Hafor Drive; west on Hafor Drive to Teg Drive; north on Teg Drive to W Benton Street; west on W Benton Street to Mormon Trek Boulevard; south on Mormon Trek Boulevard to a point adjacent to the terminus of Plaen View Drive on the centerline of Mormon Trek Boulevard; south along the centerline of Kitty Lee Road extended to the apparent intersection with the City of Iowa City Corporate Limits, then south following the Corporate Limits to the centerline of the southwest bound travel lanes of Highway 1 SW; continuing northeast along the centerline of the southwest bound travel lanes of Highway 1 S/W to its intersection with Sunset Street; northwest along Sunset Street to Ashley Drive; northeast on Ashley Drive to Wylde Green Road; then generally north on Wylde Green Road to the point of beginning.

Precinct 3: Beginning at the intersection of US Highway 6 W and 1st Avenue, southwest along 1st Avenue to its apparent intersection with the Iowa Interstate Railroad; generally southeast following the Iowa Interstate Railroad to its apparent intersection with Melrose Avenue; east along Melrose Avenue and continuing on to Byington Road to the southern edge of Grand Avenue pavement; following the southern edge of Grand Avenue pavement east to the centerline of W Burlington Street/Highway 1 where it intersects US Highway 6/S Riverside Drive; then north on US Highway 6/Riverside Drive, following the curve, to the point of beginning.

Precinct 4: From the point of beginning at the intersection N Dubuque Street and Foster Road, west along the centerline of Foster Road to its terminus adjacent to Walker Circle; northeast following the northwest parcel line of lot 110 of the Peninsula Neighborhood Phase 2A subdivision; northwest following the southwest parcel line of Outlot "A" of Oakmont Estates subdivision to the southern bank of the Iowa River, and continuing to the apparent intersection of said parcel line with the City of Iowa City Corporate Limits; generally south following the Corporate Limits to the point at which US Highway 6 intersect; generally southeast along Riverside Drive/US Highway 6 to the intersection at W Iowa Avenue, then east on W Iowa Avenue to the apparent centerline of the Iowa River; north following the centerline of the Iowa River to its apparent intersection with E Park Road; east along E Park Road to N Dubuque Street; generally north following the centerline of N Dubuque Street to a point approximately adjacent to the property 1032 N Dubuque Street, then generally north following the centerline of the southbound lanes of N Dubuque Street to the point of beginning.

Precinct 5: Beginning at the intersection of N Dubuque Street and E Park Road, west along E Park Road to its apparent intersection with the centerline of the Iowa River; generally south following the centerline of the Iowa River to its apparent intersection with the centerline of W Iowa Avenue; west on W Iowa Avenue to US Highway 6/S Riverside Drive; south on US Highway 6/S Riverside Drive to the apparent intersection of the eastbound lanes of Highway 1/Burlington Street and US Highway 6/S Riverside Drive, then west following the southern edge of the Grand Avenue pavement to Byington Road; south following Byington Road, then continuing west along Melrose Avenue to its apparent intersection with the Iowa Interstate Railroad; generally southeast following the Iowa Interstate Railroad to the apparent

intersection with the centerline of the Iowa River; north following the centerline of the Iowa River to its apparent intersection with the centerline of the eastbound lanes of Highway 1/W Burlington Street; east along Highway 1/W Burlington Street to the intersection of Highway 1/E Burlington Street and S Linn Street; north on S Linn Street to E College Street; west on E College Street to the apparent intersection of E College Street and S Dubuque Street; north on S Dubuque Street to E Iowa Avenue; west along E Iowa Avenue to N Clinton Street; north on N Clinton Street to E Jefferson Street; west on E Jefferson Street to its apparent intersection with N Capitol Street; north along the apparent centerline of N Capitol Street to its intersection with E Davenport Street; east on E Davenport Street to N Clinton Street; north on N Clinton Street to Fairchild Street; east on Fairchild Street to N Dubuque Street; then north on N Dubuque Street to the point of beginning.

Precinct 6: Beginning at the intersection of Muscatine Avenue/American Legion Road and S Scott Boulevard, west along Muscatine Avenue to 4th Avenue; south on 4th Avenue and west on F Street to 5th Avenue; south on 5th Avenue to I Street; east on I Street to 3rd Avenue; south on 3rd Avenue to J Street; east on J Street to 2nd Avenue; south on 2nd Avenue to its apparent intersection with the Iowa Interstate Railroad; southeast following the Iowa Interstate Railroad to its apparent intersection with S Scott Boulevard; then north on S Scott Boulevard to the point of beginning.

Precinct 7: Beginning at the intersection of Mormon Trek Boulevard and Bartelt Road, west on Bartelt Road, following the curve, to Roberts Road; west on Roberts Road to Westwinds Drive; north on Westwinds Drive to its intersection with the centerline of the westbound travel lanes of Melrose Avenue; west along the centerline of the westbound travel lanes of Melrose Avenue to Galway Drive; south on Galway Drive to Killarney Road; southeast on Killarney Road to Donegal Court; south along Donegal Court following the curve to Tipperary Road; south on Tipperary Road to Shannon Drive; south on Shannon Drive to Rohret Road; east on Rohret Road to Mormon Trek Boulevard; then north on Mormon Trek Boulevard to the point of beginning.

Precinct 8: Beginning at the intersection of Rohret Road and Mormon Trek Boulevard, following the centerline of Rohret Road west to the apparent intersection with US Highway 218; northwest along US Highway 218 to the apparent intersection with Melrose Avenue; west along Melrose Avenue to the City of Iowa City Corporate Limits; then tracing the Corporate Limits south, then generally east, to the apparent intersection of the centerline of Kitty Lee Road extended, southwest of Mormon Trek Boulevard; then proceeding north, continuing on Mormon Trek Boulevard to the point of beginning.

Precinct 9: Beginning at the intersection of Mormon Trek Boulevard and Hawkeye Park Road, west and then south along Hawkeye Park Road to its intersection with the centerline of the westbound travel lanes of Melrose Avenue; east along the centerline of the westbound travel lanes of Melrose Avenue to Westwinds Drive; south along Westwinds Drive to Roberts Road; east on Roberts Road to Bartelt Road; north and east on Bartelt Road following the curve to Mormon Trek Boulevard; south on Mormon Trek Boulevard to W Benton Street; east on W Benton Street to Teg Drive; south following Teg Drive to Hafor Drive; east along Hafor Drive to Denbigh Drive; south on Denbigh Drive, following the curve, to Penkridge Drive; north on Penkridge Drive to Derwen Drive; generally east on Derwen Drive to Sunset Street; north on Sunset Street to W Benton Street; west on W Benton Street to Emerald Street; north on Emerald Street and continuing north following the City of Iowa City's Corporate Limits; continuing along the City of Iowa City's Corporate Limits to the point of apparent intersection with the Iowa Interstate Railroad; northwest along the Iowa Interstate Railroad to its apparent intersection with Mormon Trek Boulevard; southwest along Mormon Trek Boulevard to the point of beginning.

Precinct 10: Beginning at the intersection of E Benton Street and S Clinton Street, west along E Benton Street to Weeber Street; south on Weeber Street to Edingale Drive; southwest along Edingale Drive to Wylde Green Road; south on Wylde Green Road to Ashley Drive; southwest on Ashley Drive to Sunset Street; southeast on Sunset Street to the centerline of the southwest bound travel lanes of Highway 1 W; southwest along the southwest bound travel lanes of Highway 1 W to the apparent intersection with the City of Iowa City's Corporate Limits; tracing the Corporate Limits generally southeast to their apparent intersection with Sand Road SE; north along Sand Road SE and continuing on S Gilbert Street to the apparent intersection with the CRANDIC Railroad; following the CRANDIC Railroad northeast to its apparent intersection with Southgate Avenue; east on Southgate Avenue to Keokuk Street; north on Keokuk Street to Plum Street; southeast

on Plum Street to Marcy Street; north on Marcy Street to Highland Avenue; east on Highland Avenue to Marcy Street; north on Marcy Street to Florence Street; west on Florence Street to Keokuk Street; south on Keokuk Street to Keokuk Court; west on Keokuk Court to Diana Street; north on Diana Street to Kirkwood Avenue; west on Kirkwood Avenue to S Clinton Street; then north on S Clinton Street to the point of beginning.

Precinct 11: Beginning at the intersection of S Dubuque Street and E Burlington Street/Highway 1, west along E Burlington Street/Highway 1 to the apparent intersection of the centerline of the eastbound travel lane of W Burlington Street/Highway 1 and the center line of the Iowa River; south along the centerline of the Iowa River to its apparent intersection with W Benton Street; east along W Benton Street to S Clinton Street; south on S Clinton Street to Kirkwood Avenue; east on Kirkwood Avenue to Diana Street; south on Diana Street to Keokuk Court; east on Keokuk Court to Keokuk Street; north on Keokuk Street to Florence Street; east on Florence Street to Marcy Street; north on Marcy Street to Kirkwood Avenue; west on Kirkwood Avenue to S Lucas Street; north on S Lucas Street to Page Street; west on Page Street to S Dodge Street; north on S Dodge Street to the apparent intersection with the Iowa Interstate Railroad; west along the Iowa Interstate Railroad to its apparent intersection with S Gilbert Street; north on S Gilbert Street to E Court Street; west on E Court Street to Maiden Lane; south and then west on Maiden Lane to S Linn Street; north on S Linn Street to E Court Street; west on E Court Street to S Dubuque Street; then north on S Dubuque Street to the point of beginning.

Precinct 12: Beginning at the intersection of US Highway 6 SE and 420th Street SE, east along 420th Street to its apparent intersection with the City of Iowa City's Corporate Limits; tracing the Corporate limits generally east to Taft Avenue SE then along Taft Avenue SE to the north then west to the point of apparent intersection of the Corporate Limits with S Scott Boulevard; west following the Iowa Interstate Railroad from its apparent intersection with S Scott Boulevard to its apparent intersection with the centerline of Industrial Park Road extended; southwest along Industrial Park Road and continuing southwest along Lakeside Drive to its intersection with Nevada Ave; north on Nevada Avenue to Miami Drive; southwest on Miami Drive to Lakeside Drive; west on Lakeside Drive to the apparent intersection with the Sycamore Greenway Trail; south along the Sycamore Greenway Trail to the apparent intersection with the centerline of Whispering Meadow Drive extended; east then south following Whispering Meadow Drive to its apparent intersection with the northern boundary of the Saddlebrook Meadows Part 1 subdivision; west along said boundary to the point of apparent intersection with the Corporate Limits; tracing the Corporate Limits generally south to Napoleon Street SE; then continuing to trace the Corporate Limits north to the point of beginning. Precinct 13: Beginning at the intersection of Marietta Avenue and George Street, south along George Street to its apparent intersection with the City of Iowa City Corporate Limits; west along the Corporate Limits to the point of apparent intersection with Sunset Street; south on Sunset Street to W Benton Street; east on W Benton Street to Wylde Green Road; south along Wylde Green Road to Edingale Drive; northeast on Edingale Drive to Weeber Street; north following Weeber Street to W Benton Street; east on W Benton Street to its apparent intersection with the centerline of the Iowa River; northwest along the centerline of the Iowa River to its apparent intersection with the Iowa Interstate Railroad; generally northwest following the Iowa Interstate Railroad to its apparent intersection with the Corporate Limits; generally southwest following the Corporate Limits to their apparent intersection with Marietta Avenue; then west along Marietta Avenue to the point of beginning.

Precinct 14: Beginning at the intersection of S Summit Street and Kirkwood Avenue, west on Kirkwood Avenue to its intersection with Marcy Street; south on Marcy Street to Highland Avenue; west on Highland Avenue to Marcy Street; south on Marcy Street to Plum Street; northwest on Plum Street to Keokuk Street; south on Keokuk Street to Sandusky Drive; east following Sandusky Street to Bancroft Drive; north on Bancroft Drive to Crosby Lane; east on Crosby Lane to Sycamore Street; north on Sycamore Street to Lower Muscatine Road; northwest on Lower Muscatine Road to its intersection with Pine Street; north on Pine Street to the apparent intersection of Pine Street's centerline extended with the Iowa Interstate Railroad; west along the Iowa Interstate Railroad to its apparent intersection with S Summit Street; then south on S Summit Street to the point of beginning.

Precinct 15: Beginning at the intersection of Pine Street and Lower Muscatine Road, southeast along Lower Muscatine Road to Sycamore Street; south on Sycamore Street to Crosby Lane; west on Crosby Lane to Bancroft Drive; south on Bancroft Drive to Sandusky Drive; west on Sandusky Drive to Taylor Drive; south on Taylor Drive to Burns Avenue; east

on Burns Avenue to Russell Drive; south on Russell Drive to Wetherby Drive; east on Wetherby Drive, and continuing on Lakeside Drive, to Miami Drive; northeast on Miami Drive to Nevada Avenue; southeast on Nevada Avenue to Lakeside Drive; generally northeast along Lakeside Drive, continuing on Industrial Park Road, to the apparent intersection of its centerline extended and the Iowa Interstate Railroad; northwest following the Iowa Interstate Railroad to its apparent intersection with the extended centerline of Pine Street; then south on Pine Street to the point of beginning.

Precinct 16: Beginning at the intersection of N 1st Avenue and Rochester Avenue, west along Rochester Avenue to N 7th Avenue; south on N 7th Avenue to Muscatine Avenue; southeast along Muscatine Avenue to Willow Street; north on Willow Street to Eastwood Drive; west on Eastwood Drive to Brookside Drive; west on Brookside Drive to Meadow Street; north on Meadow Street to Friendship Street; east on Friendship Street to Kenwood Drive; north on Kenwood Drive to E Court Street; west on E Court Street to Washington Park Road; north on Washington Park Road to Potomac Drive; west and north on Potomac Drive to E Washington Street; west on E Washington Street to N 1st Avenue; then north on N 1st Avenue to the point of beginning.

Precinct 17: Beginning at the intersection of N 7th Avenue and Rochester Avenue, west on Rochester Avenue to Parsons Avenue; south on Parsons Avenue to E Jefferson Street; west on E Jefferson Street to N Dodge Street/Highway 1; south on N Dodge Street/Highway 1 to E Iowa Avenue; west on E Iowa Avenue to S Johnson Street; south on S Johnson Street to E Burlington Street/Highway 1; east on E Burlington Street/Highway 1 to S Dodge Street; south on S Dodge Street to Bowery Street; east on Bowery Street to S Governor Street; north on S Governor Street E Burlington Street/Highway 1; east on E Burlington Street to Muscatine Avenue; southeast along Muscatine Avenue to S 7th Avenue; then north on S 7th Avenue to the point of beginning.

Precinct 18: Beginning at the intersection of Muscatine Avenue and E Burlington Street, west on E Burlington Street to S Governor Street/Highway 1; south on S Governor Street to Bowery Street; west on Bowery Street to S Gilbert Street; south on S Gilbert Street to its apparent intersection with the Iowa Interstate Railroad; east along the Iowa Interstate Railroad to its apparent intersection with S Dodge Street; south on S Dodge Street to Page Street; east on Page Street to S Lucas Street; south on S Lucas Street to Kirkwood Avenue; east on Kirkwood Avenue to S Summit Street; north on S Summit Street to its apparent intersection with the Iowa Interstate Railroad; southeast along the Iowa Interstate Railroad to its apparent intersection with 2nd Avenue extended; north on 2nd Avenue to J Street; west on J Street to 3rd Avenue; north on 3rd Avenue to I Street; west on I Street to 5th Avenue; north on 5th Avenue to F Street; east on F Street and north on 4th Avenue to Muscatine Avenue; then northwest on Muscatine Avenue to the point of beginning.

Precinct 19: Beginning at the intersection of S Van Buren Street and E College Street, west on E College Street to S Linn Street; south on S Linn Street to E Burlington Street/Highway 1; west on E Burlington Street/Highway 1 to S Dubuque Street; south on S Dubuque Street to E Court Street; east on E Court Street to S Linn Street; south on S Linn Street to Maiden Lane; east on Maiden Lane following the curve north to E Court Street; east on E Court Street to S Gilbert Street; south on S Gilbert Street to Bowery Street; east on Bowery Street to S Dodge Street; north on S Dodge Street to E Burlington Street/Highway 1; west on E Burlington Street/Highway 1 to S Van Buren Street; then north on S Van Buren Street to the point of beginning.

Precinct 20: Beginning at the intersection of E Davenport Street and N Dubuque Street, west on E Davenport Street to N Capitol Street; south along the apparent centerline of N Capitol Street to E Jefferson Street; east on E Jefferson Street to N Clinton Street; south on N Clinton Street to E Iowa Avenue; east on E Iowa Avenue to S Dubuque Street; south on S Dubuque Street to E College Street; east along the apparent centerline of E College Street to S Van Buren Street; south on S Van Buren Street to E Burlington Street/Highway 1; east on E Burlington Street/Highway 1 to S Johnson Street; north on S Johnson Street to E Market Street; west on E Market Street to N Dubuque Street; then north on N Dubuque Street to the point of beginning.

Precinct 21: Beginning at the intersection of N Governor Street and Kimball Road, southwest along Kimball Road to N Dubuque Street; south on N Dubuque Street to Fairchild Street; west on Fairchild Street to N Clinton Street; south on N Clinton Street to E Davenport Street; east on E Davenport Street to N Dubuque Street; south on N Dubuque Street to E Market Street; east on E Market Street to N Johnson Street; south on N Johnson Street to E Iowa Avenue; east along E

Iowa Avenue to N Dodge Street/Highway 1; north on N Dodge Street/Highway 1 to E Jefferson Street; east on E Jefferson Street to N Governor Street/Highway 1; north on N Governor Street/Highway 1 to its intersection with N Dodge Street/Highway 1; then continuing along N Governor Street to the point of beginning.

Precinct 22: Beginning at the intersection of N Governor Street and Kimball Road, south on N Governor Street to its intersection with N Dodge Street/Highway 1; northeast on N Dodge Street/Highway 1 to N Summit Street/Prairie Du Chien Road; north along Prairie Du Chien Road to its apparent intersection with the City of Iowa City Corporate Limits; then tracing the Corporate Limits east and north to the apparent intersection with the centerline of the Iowa River; then continuing along the Corporate Limits to the apparent intersection with the southwest parcel line of Outlot "A" of Oakmont Estates subdivision; southeast along the aforementioned parcel line to the point of intersection with the parcel line of lot 110 of the Peninsula Neighborhood Phase 2A subdivision; then southwest following said parcel line to the terminus of Foster Road; generally east following the curvature of Foster Road to N Dubuque Street; south along the centerline of the southbound lanes of N Dubuque Street a point approximately adjacent to 1032 N Dubuque Street, then following the centerline of the northbound lanes of N Dubuque Street to the intersection with Kimball Road; then generally northeast along Kimball Road to the point of beginning.

Precinct 23: Beginning at the intersection of N Governor Street/Highway 1 and E Jefferson Street, east along E Jefferson Street to Parsons Avenue; north on Parsons Avenue to Rochester Avenue; east along Rochester Avenue and continuing on Herbert Hoover Highway to the point of apparent intersection with the City of Iowa City Corporate Limits; tracing the Corporate Limits north, then west, to their intersection with Prairie Du Chien Road; south along Prairie Du Chien Road to N Dodge Street/Highway 1; southwest along N Dodge Street/Highway 1 to N Governor Street/Highway 1; then south along N Governor Street/Highway 1 to the point of beginning.

Precinct 24: Beginning at the intersection of Taft Avenue SE and E Court Street, west along E Court Street to Kenwood Drive; south on Kenwood Drive to Friendship Street; southwest on Friendship Street to Meadow Street; southeast on Meadow Street to Brookside Drive; east on Brookside Drive to Eastwood Drive; generally east on Eastwood Drive to Willow Street; south on Willow Street to Muscatine Avenue; east on Muscatine Avenue to S Scott Boulevard; south on S Scott Boulevard to the apparent intersection with the City of Iowa City Corporate Limits north of Wellington Drive; then tracing the Corporate Limit boundary generally east, then north, to the point of beginning.

Precinct 25: Beginning at the intersection of Taft Avenue SE and E Court Street, following the City of Iowa City Corporate Limits north to the intersection of Taft Avenue and Lower West Branch Road; continuing to follow the Corporate limits west to a point adjacent to Broadmoor Lane, then continuing along the Corporate Limits north and encompassing the area containing the Churchill Meadows subdivisions, then continuing along the Corporate Limits south to Lower West Branch Road; then following the Corporate Limits west and north to the apparent intersection with Herbert Hoover Highway; southwest along Herbert Hoover Highway to N Scott Boulevard; south on N Scott Boulevard to E Washington Street; west on E Washington Street to Friendship Street; south on Friendship Street to E Court Street; then east on E Court Street to the point of beginning.

Precinct 26: Beginning at the intersection of Hawkeye Park Road and N Mormon Trek Boulevard, north on N Mormon Trek Boulevard to its apparent intersection with the Iowa Interstate Railroad and the City of Iowa City Corporate Limits; northwest tracing the Corporate Limits, and continuing southwest, to the point of intersection on Kennedy Parkway; following Kennedy Parkway to the west and continuing west along the Corporate Limits to their apparent intersection with Deer Creek Road SE; tracing the Corporate Limits generally south to Melrose Avenue; east on Melrose Avenue to US Highway 218; southeast along US Highway 218 to its apparent intersection with Rohret Road; east on Rohret Road to Shannon Drive; north along Shannon Drive to Tipperary Road; generally northwest along Tipperary Road to Donegal Court; generally northeast along Donegal Court to Killarney Road; northwest along Killarney Road to Galway Drive; north on Galway Drive to Melrose Avenue; east on Melrose Avenue to Hawkeye Park Road; then north and east along Hawkeye Park Road to the point of beginning.

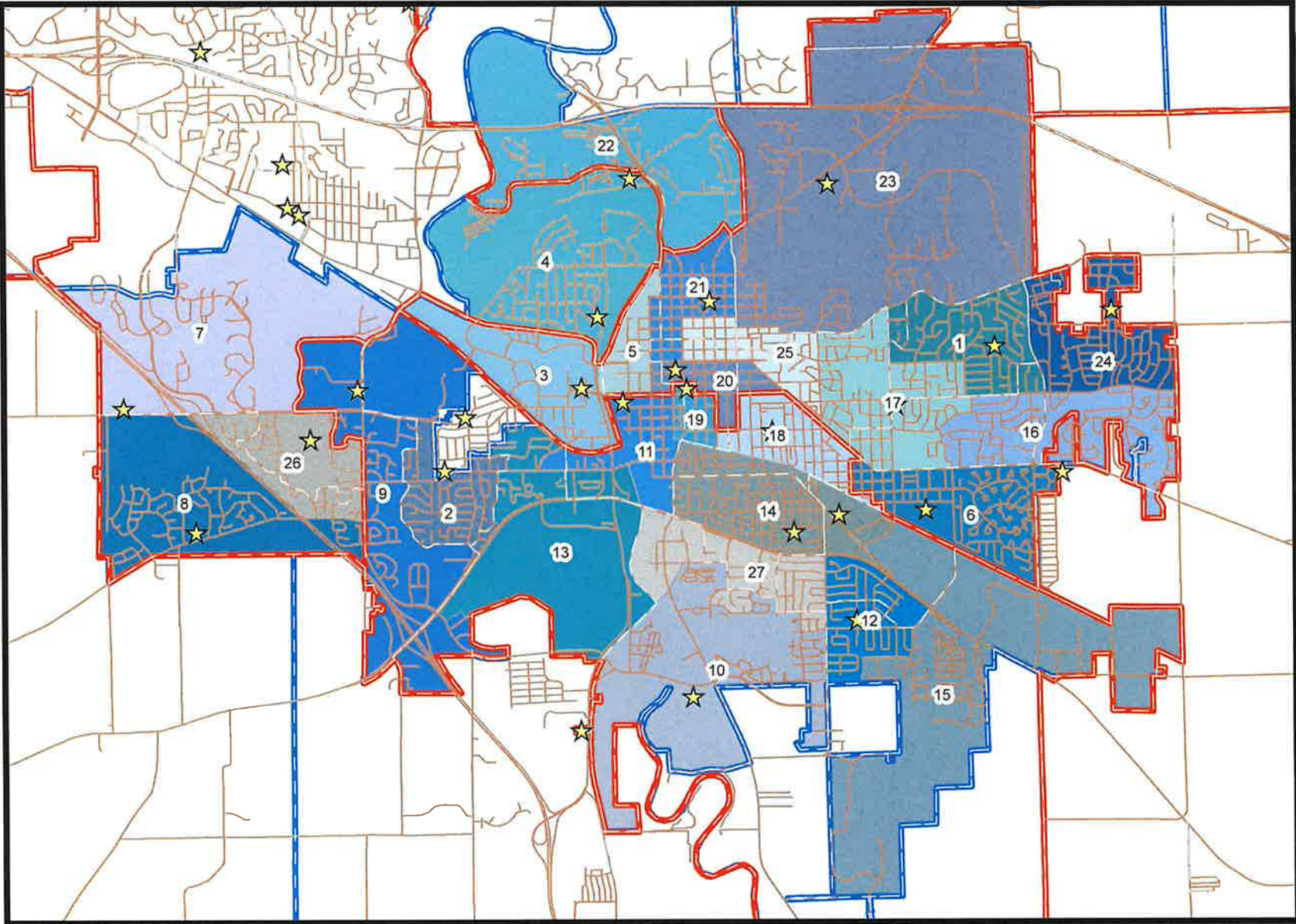
Precinct 27: Beginning at the intersection of Keokuk Street and Southgate Avenue, west along Southgate Avenue to its apparent intersection with the CRANDIC Railroad; south along the CRANDIC Railroad to its apparent intersection with S

Gilbert Street; south on S Gilbert Street to its intersection with the City of Iowa City Corporate Limits; east along the Corporate Limit boundary, tracing the boundary south, to its intersection with Sycamore Street SE; north on Sycamore Street SE to its apparent intersection with the Corporate Limits; east along this boundary, and continuing along the southern boundary of the Sycamore Woods Part 5 and Whispering Meadows Part 2 subdivisions to their apparent intersection with Whispering Meadows Drive; following Whispering Meadows Drive north and then west to its apparent intersection with the Sycamore Greenway Trail; north along the Sycamore Greenway Trail to Lakeside Drive; west on Lakeside Drive and continuing on Wetherby Drive to Russell Drive; north on Russell Drive to Burns Avenue; west on Burns Avenue to Taylor Drive; north on Taylor Drive to Sandusky Drive; west following Sandusky Drive to Keokuk Street; then north on Keokuk Street to the point of beginning.

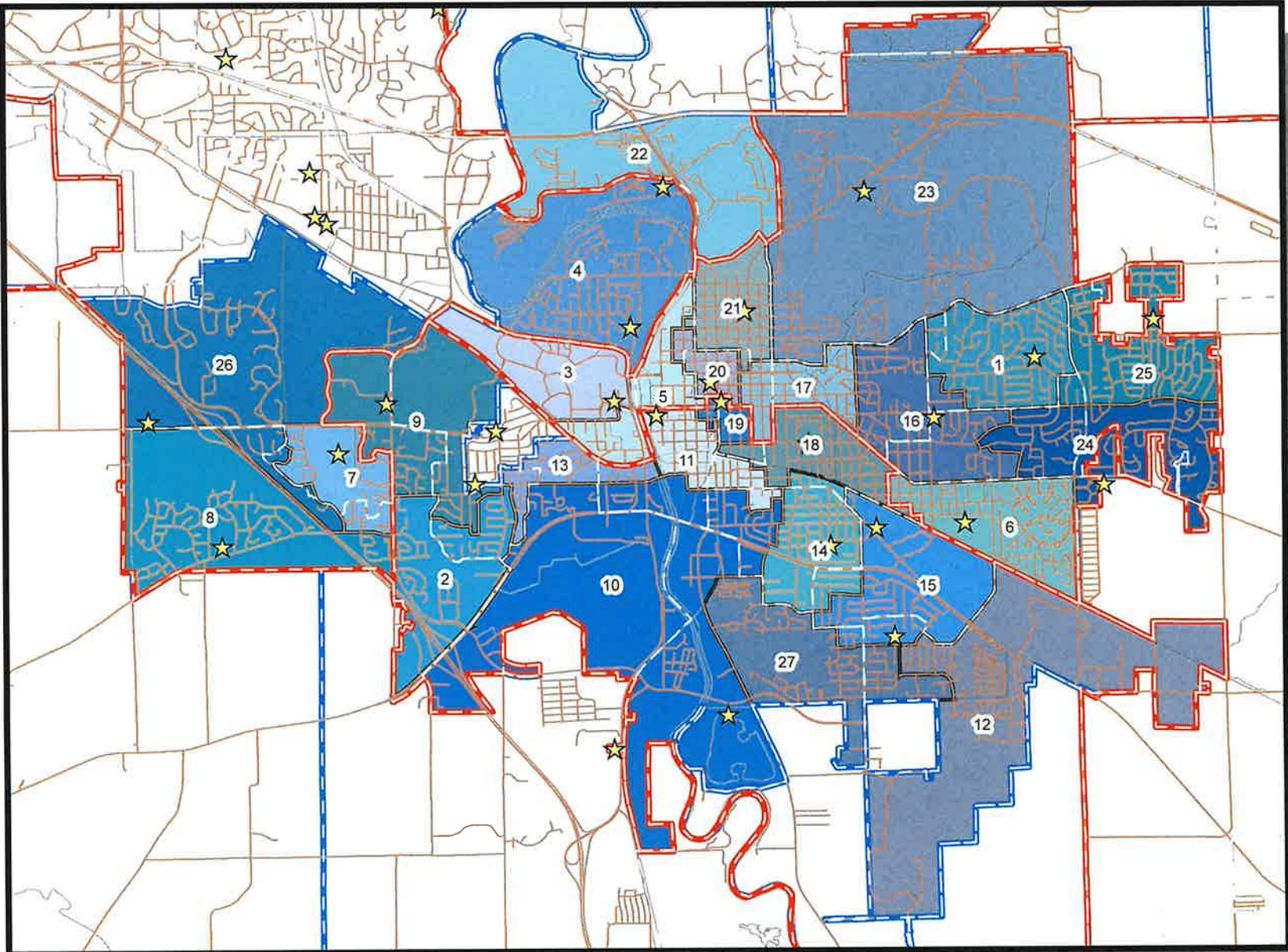
CITY OF IOWA CITY
Precinct Proposals

12-13-21
(Date)
Proposal A

Former precinct boundaries
are shown with a white
dashed line.



Proposal C



Kellie Fruehling

From: Dorothy Whiston <dorothy.whiston@gmail.com>
Sent: Thursday, December 9, 2021 5:21 PM
To: *City Council
Subject: Southside Business Revitalization efforts

Late Handouts Distributed

12-13-21

(Date)



Dear Council members,

I hope you will support the Southside business revitalization efforts through the SSMID they are proposing. I think this is an incredibly creative and intelligent initiative and that the effects of implementing the SSMID would be far reaching and long lasting, to the benefit of the Southside and all of Iowa City. Again, I hope you will give your full support to this project.

Thanks for all you do!

Dorothy Whiston

Dorothy Whiston, D. Min.
Interfaith Chaplain, Inside Out Reentry Community
Spiritual Director, Soul Friends Ministry
319-321-7920
dorothy.whiston@gmail.com

"Life is this simple: we are living in a world that is absolutely transparent and the divine is shining through it all the time." ~ Thomas Merton

Kellie Fruehling

From: Susan Blanchard <gigiblanchard15@gmail.com>
Sent: Thursday, December 9, 2021 6:49 PM
To: *City Council
Subject: South District SSMID

Late Handouts Distributed

12-13-21

(Date)



Dear Council,

This is what we need on our side of town. For locals its a way to revitalize our neighborhoods and promote local entrepreneurs. We can invest in , support and build these businesses.

Please give us hope and a way to make Southeast Iowa City as vital as the rest of the community.

Thanks for your support.

Susan Blanchard
2801 HWY 6E, lot 362
Iowa City, Iowa 52240

Kellie Fruehling

From: Elizabeth Liddle <ELiddle@midwestone.com>
Sent: Friday, December 10, 2021 11:26 AM
To: *City Council
Subject: South District SSMID

Late Handouts Distributed

12-13-21

(Date)



To City Council members,

Thank you for your time and review of the South District SSMID proposal. I represent MidWestOne Bank and we are in full support of this proposal. MidWestOne Bank has had a long standing commitment to serving this neighborhood. There are several things that excite me about the SSMID. Specifically, bringing our community together and uplifting one another. The ability to increase foot traffic and attract new businesses to the neighborhood are key to each of our unique businesses success.

I so admire this community and am able to see on a daily basis the impact this SSMID could have. If the last two years have taught me anything, it is that we are stronger together. This South District SSMID would make that collaboration a reality and bring positive attention. We are asking for your support in this proposal.

Thank you for your consideration,

Liz Liddle

ELIZABETH LIDDLE

RETAIL MANAGING OFFICER NMLS ID 1754594

Direct: 319.356.5817
Phone: 800.247.4418
Fax: 319.356.5849

1906 Keokuk Street
Iowa City, IA 52240



MidWestOne
Bank.

[MidWestOne.bank](https://www.MidWestOne.bank)

IMPORTANT: This message, including any attachments, is intended only for the use of the individual or entity to which it is addressed, and may contain information that is privileged, confidential, and exempt from disclosure under applicable law. If you are not the intended recipient, or the employee or agent responsible for delivering the message to the intended recipient, you are hereby notified that any use, retention, dissemination, distribution or copying of this communication is strictly prohibited. If you have received this communication in error, please notify the sender immediately and destroy your copy. Thank you.

Kellie Fruehling

From: V Fixmer-Oraiz <vfixmeroraiz@astigplanning.com>
Sent: Friday, December 10, 2021 3:20 PM
To: *City Council
Subject: Astig Planning- Support for the South District SSMID comment

Late Handouts Distributed12-13-21**(Date)**

Hello City Council Members and staff,

As the CEO and Founder of Astig Planning, an Iowa City-based planning firm located in the proposed South District SSMID area, I want to officially offer my full endorsement of this plan in writing.

The South District SSMID would be a huge boost to the commercial area and begin to reflect the vibrant and diverse neighborhood that surrounds it. I have had the honor and privilege of being a commercial neighbor and hosting community engagement and outreach activities in this area has shown me just how incredible the South District is. There is so much going on and having a SSMID would only accelerate and compliment the hard work and fun that is happening here. I also think it's important to build up a physical space where people can potentially see other small businesses run by BIPOC individuals that are serving their communities.

I hope you see the benefit of building up another strong commercial hub in Iowa City, one that truly reflects and supports the diverse communities in this town.

Sincerely,
 V

V Fixmer-Oraiz, AICP
(they, she, siya)
 CEO & Founder
 319.243.3426
astigplanning.com



Kellie Fruehling

From: Temple Hiatt <templehiatt@yahoo.com>
Sent: Saturday, December 11, 2021 9:55 PM
To: *City Council
Subject: SDNA SSMID

Late Handouts Distributed

12-13-21

(Date)



Dear City Council,

I am a volunteer with the local group of Moms Demand Action for Gun Sense in America. Our group has frequently supported efforts in the South District Neighborhood Association to include the annual team up to clean up, fundraising for the art mural, and the diversity market. All of these efforts, including the SDNA SSMID, contribute to a concept called Crime Prevention Through Environmental Design. As a south district resident of Iowa City for more than 40 years, I support these Business Revitalization efforts spearheaded by the SDNA.

Sincerely,
Temple Hiatt, Iowa City, IA

<https://everytownsupportfund.org/report/crime-prevention-through-environmental-design/>

Kellie Fruehling

From: Barbara Anderson <gretlmam@hotmail.com>
Sent: Monday, December 13, 2021 2:28 PM
To: *City Council
Subject: YOUR SUPPORT OF THE SOUTH DISTRICT SSMID at your City Council Meeting, December 14, 2021

Late Handouts Distributed



Dear Iowa City Council Members,

12-13-21
 (Date)

I strongly believe each and every one of you should vote for the South District SSMID which will bring vital and meaningful growth to current and new businesses as well as provide a much-needed haven for community involvement, interaction, and a sense of well-being not only for residents of the South District but for our entire City and beyond.

Patterned after the successful SSMID of the Iowa City Downtown District, this economic tool will greatly benefit businesses and the community of the South District beyond the basic municipal services the City will still provide.

I have volunteered for the South District for almost two years now, and after living in Illinois, Colorado, and Los Angeles, have never been part of a more vibrant, energetic, goal-oriented community as the South District. Hats off to Angie Jordan and the Leadership Committee and to our many allies and volunteers who have worked countless hours in making the South District a real neighborhood with so many meaningful happenings. Residents of this community and beyond have flocked to our many events: the huge mural ribbon cutting, the drive-through turkey dinner during the Pandemic, the beautiful success of our Spring Clean Up Saturday, and the amazing success of our summer long Diversity Markets. I witnessed most of these markets and it was a joy to see the expressions of people as they leisurely strolled along between the many vendors offering home cooked food, unique art, delightful music, the Children's Museum, and more. Clearly, there was great comradery at this neighborhood summer adventure both in seeing small businesses do well, and the overall enjoyment we had being part of this market scene.

Now imagine Pepperwood Plaza, Vital and Lively year around ! People milling around a renovated plaza, eating at the outdoor cafes of new restaurants, listening to music by a fountain, meeting friends for coffee at a diner or a coffee shop, buying socks and jeans at a retail shop and more!

This grand intersection of businesses and community will thrive and help the business owners of the South District as they have helped those businesses in our Downtown District. The monies to help with this expansion and business growth come from the South District

businesses themselves. They believe in themselves, in their ability to grow and succeed even more, and in doing so provide for not only a stable economic environment but provide meaningful interaction, fun, and a joyful community that benefits us all.

I implore you, the Iowa City Council to recognize the value the South District SSMID brings to the Community, to the entire city of Iowa City, and vote YES on establishing the South District SSMID. Thank you so much!

All the best,
Barbara D. Anderson
South District Ally

#11

Kellie Fruehling

From: James Pobst <simulacraj@gmail.com>
Sent: Monday, December 13, 2021 2:53 PM
To: *City Council
Subject: My support for the South District SSMID petition

Late Handouts Distributed

12-13-21

(Date)



Hello, I am an Iowa City resident and I am writing the City Council to offer my **strong support for the SSMID proposal to revitalize the Pepperwood Plaza and adjacent areas for the benefit of local and city-wide residents.**

I live nearby in Bon Aire, and can't tell you how many times I've driven by or biked by the Pepperwood area along Hwy 6 and thought to myself how depressing/sad it is that most people only know this area for the Taco Bell, a bank, and the post office, and have no idea of the diversity of local business ventures in the surrounding residential area. In a recent community discussion at Film Scene (part of the Witching Hour events), it was shared with me how many local businesses could benefit from having their own storefronts in Pepperwood, instead of having to be run out of their own homes. Having the plazas fill up with local business would also be a visible sign of how the City supports efforts at a local economy based on cultural diversity.

For the benefit of local residents, please support this petition for funding and other support to revitalize Pepperwood, by the South District Neighborhood Association. I think this would be a win for everybody involved - residents, tourists, and commuters. If possible, I plan to also show up at the public hearing tomorrow night.

Thank you for your consideration.

Sincerely,
James H Pobst

P.S. I can also be reached at james.pobst@pearson.com

#11

Kellie Fruehling

From: Carrie Z. Norton <czn46@hotmail.com>
Sent: Monday, December 13, 2021 3:47 PM
To: *City Council
Subject: Support for the Southside SSMID

Late Handouts Distributed

12-13-21

(Date)



As a long serving member of the Shelter House Board of Directors and Immediate Past President, I am delighted to express our organization's support of the SSMID proposal before City Council.

At our recent Board of Directors meeting, the Board was unanimous in its support of our Executive Director signing the South District Self-Supporting Municipal Improvement District Petition, which includes the Housing First project Cross Park Place that we own and operate at 820 Cross Park Avenue and near our other properties located at 429 Southgate Avenue (Emergency Shelter), and 501 Southgate Avenue (a new and additional Housing First program, the 501 Project).

Shelter House continues to invest in the neighborhoods in which we operate. And our South District neighbors have continued to support our work and expanding housing services at Cross Park Place. We have invested staff time in development of this SSMID district and will continue to support its success and formation as it grows. This proposed SSMID district will enhance important efforts throughout the South District, including the wayfinding, retail recruitment and retention, pedestrian connects, special projects, events, and other improved neighborhood access for all residents.

The Board of Directors of Shelter House urges you to support this initiative and invest in its success. And on a personal note, as a southeast Iowa Citian, I totally applaud the enrichment of my neighborhood and another step toward becoming a "destination"!

Carrie Z. Norton
Immediate Past President
Shelter House Board of Directors
